



# Configuration Software Handbook

## AutoVoice BR-45 Voice Alarm System



COPYRIGHT ©

This publication, or parts thereof, may not be reproduced in any form, by any method, for any purpose.

Autronica Fire and Security AS and its subsidiaries assume no responsibility for any errors that may appear in the publication, or for damages arising from the information in it. No information in this publication should be regarded as a warranty made by Autronica Fire and Security. The information in this publication may be updated without notice.

Product names mentioned in this publication may be trademarks. They are used for identification purposes only!



# Table of Contents

---

<b>1. Introduction</b>	<b>4</b>
1.1 About This Handbook	4
1.2 The Reader	4
1.3 Overview	4
<b>2. Installation</b>	<b>5</b>
2.1 System Requirements	5
2.2 Installation Media	5
2.2.1 Install from CD-ROM or Floppy Disk	5
2.2.2 Installation from ZIP Archives	5
2.3 Running Setup	6
<b>3. Running the software</b>	<b>7</b>
3.1 Starting up	7
3.2 Changing language	7
3.3 Appearance	8
3.3.1 VA-450 window	8
3.3.2 Block Diagram	11
3.3.3 Device List	15
3.3.4 VA-450 Photo View	17
3.3.5 Error List	18
3.4 General settings	18
3.4.1 Date and Time	19
3.4.2 Active Zones in Music Mode	19
3.4.3 Active Zones in AUX Mode	19
3.4.4 Volume Restoration	19
3.4.5 Relay activation	19
3.4.6 Battery operated	20
3.5 Booster 1/Hot Standby Booster/Booster 2	20
3.6 Evacuation Message	21
3.7 Alarm Message	22
3.8 Battery	23
3.9 Fireman Microphone	23
3.10 External Contact "Evacuation"	24
3.11 External Contact "Alarm"	24
3.12 Zones 1, 2, 3, 4, and Direct Outputs 1 and 2	25
<b>4. Reader's Comments</b>	<b>27</b>

# 1. Introduction

---

## 1.1 About This Handbook

This handbook provides all instructions needed to use the BR-45 configuration software.

## 1.2 The Reader

This handbook is intended for use by internal personal at Autronica Fire and Security AS. The reader is expected to have some level of familiarity with concepts within voice-alarm systems, AutoVoice BR-45 and the Microsoft Windows operating system.

## 1.3 Overview

The BR-45 service software provides service tools for configuration and maintenance of the BR-45 voice-alarm system. The software allows users to

- perform initial configuration
- calibrate the panel
- download calibrated/measured system values
- configure input/output usage
- configure default volumes
- upload messages in MP3 format
- configure which message is broadcast when
- configure what is broadcast to which zones
- configure tolerances
- review and download error list

---

## 2. Installation

---

This section discusses how to install the BR-45 service software

### 2.1 System Requirements

The BR-45 system software runs on any computer that runs Windows 95, 98, NT, 2000(Pro), or XP. Note that in order to connect to the BR-45 panel, the computer must also be equipped with a suitable serial interface.

### 2.2 Installation Media

The BR-45 service software may be provided on any of the following media:

- CD-ROM
- Floppy disk

The software may also be distributed via e-mail, in which case it will be delivered as a ZIP archive. To decode the ZIP archive, the user must have a ZIP-decoding application such as WinZip installed on their computer.

#### 2.2.1 Install from CD-ROM or Floppy Disk

To install the BR-45 service software, insert the media into the relevant disk drive. If the software installer does not start automatically, use Windows Explorer to find the BR-45SW (to start Windows Explorer, use the key combination Windows Key + E, or locate it in the Start menu).

#### 2.2.2 Installation from ZIP Archives

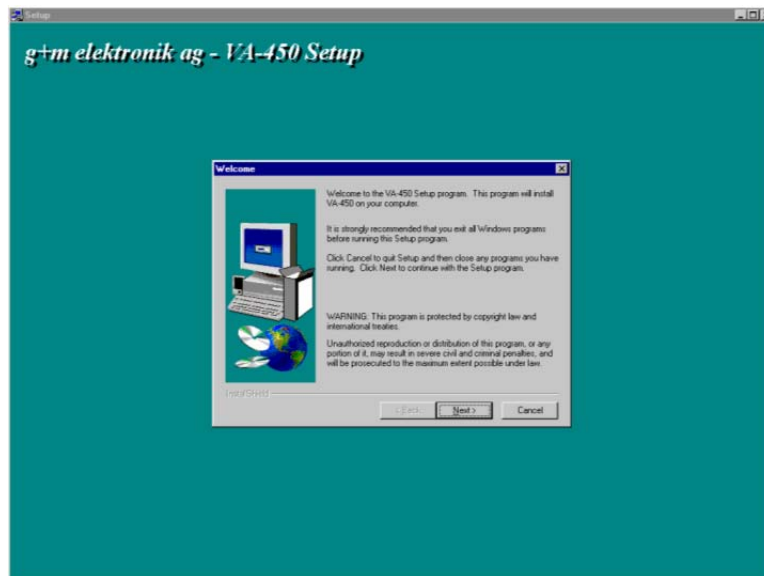
To install from a ZIP archive, double-click BR-45SW.zip and then double-click Setup.exe.



Double-click Setup.exe to start the set-up procedure.

## 2.3 Running Setup

Setup presents a number of dialogues to the user, these provide information and allow the user to decide where the software is to be installed. Follow the on-screen instructions, entering information where necessary. Setup asks where to install the software: make a note of this location; Setup also asks whether or not to put a shortcut into the Start menu, doing this makes it easier to find and run the application.



When setup is completed, the BR-45 service software is ready to use.

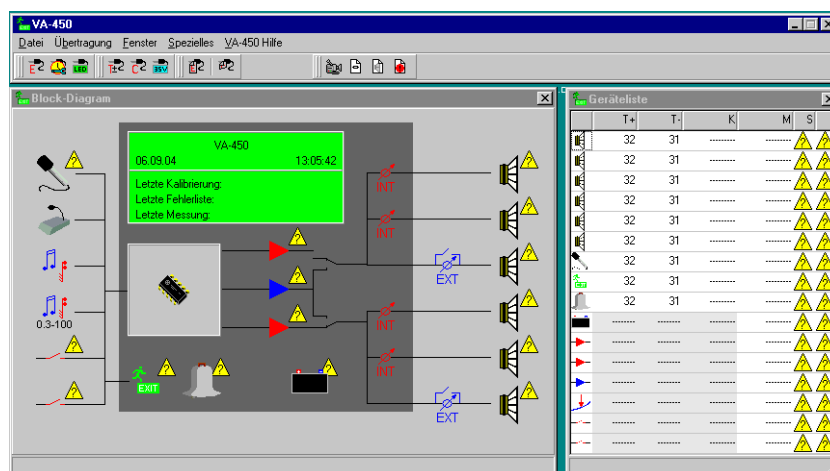
# 3. Running the software

If a shortcut was added to the Start menu, start the software by selecting the icon; if no shortcut has been made, locate the BR-45 service software manually using Windows Explorer.

To start the software, double-click the ### BR-45 service software icon.

## 3.1 Starting up

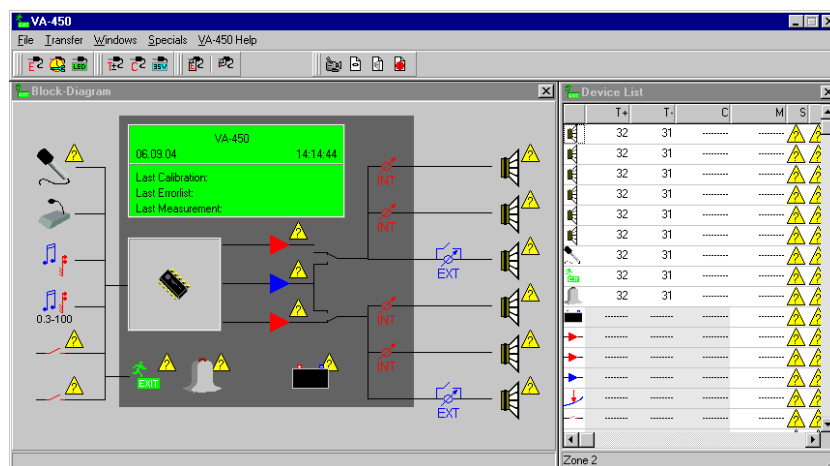
When the software has started and any splash screens have disappeared, the following is visible:



## 3.2 Changing language

The BR-45 configuration software starts in German, to change this to another language follow the procedure described in section 3.3.1.4.

The following screen appears:



### 3.3 Appearance

The BR-45 service software, by default, displays the following windows VA-450, Block Diagram and Device List. Additionally, the BR-45 service software can also display the following windows: VA-450 Photo View and Error List. The contents and functions of these windows are covered in the following sections.

#### 3.3.1 VA-450 window



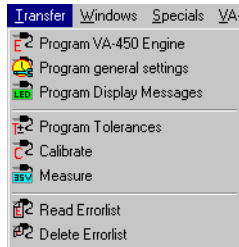
VA-450 contains the menus for the application as well as a number of function buttons.

##### 3.3.1.1 File



Menu item	Function
File > Exit	Exits the application

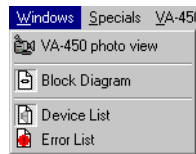
##### 3.3.1.2 Transfer



Menu item	Function
Transfer > Program VA-450 Engine	Transfers new system-software engine to the BR-45 panel
Transfer > Program general settings	Transfers general settings to BR-45 panel; see section 3.4
Transfer > Program Display Messages	Transfers display messages to BR-45 panel; see sections 3.6 and 3.7
Program Tolerances	Programs the BR-45 panel with the configured tolerances; see section 0
Transfer > Calibrate	Calibrates the BR-45 panel
Transfer > Measure	Measures the values for the BR-45 panel
Transfer > Read Errorlist	Reads the error list from the BR-45 panel; see sections 0 and 3.5 – 3.12
Transfer > Delete Errorlist	Delete error list from BR-45 panel



### 3.3.1.3 Windows

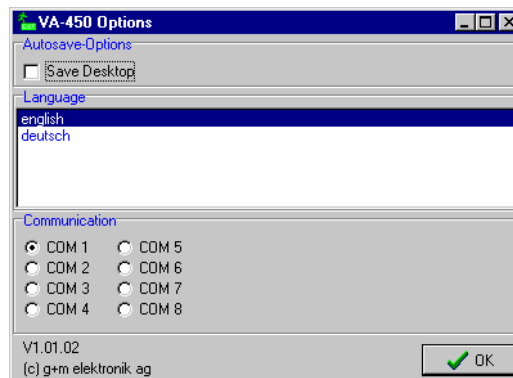


Menu item	Function
Windows > VA-450 photo view	Reveals/hides BR-45 photograph-view window
Windows > Block Diagram	Reveals/hides the block diagram window
Windows > Device List	Reveals/hides the device list window
Windows > Error List	Reveals/hides the error list window

### 3.3.1.4 Specials



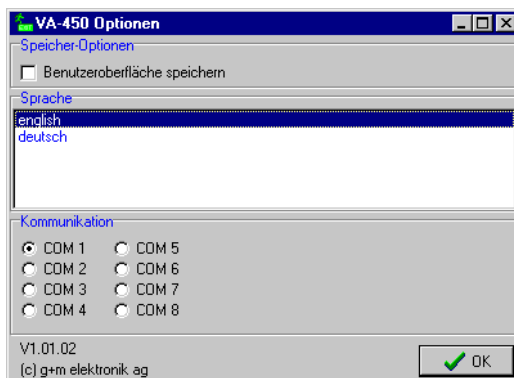
Menu item	Function
Specials > Options	Displays the preferences for the application



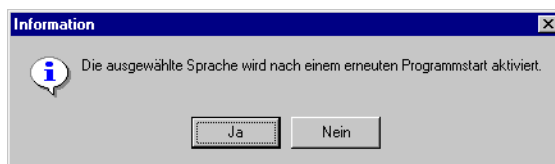
The preferences menu allows the application language to be changed, as well as setting AutoSave to the Desktop (a checkbox option, which is unchecked by default) and which COM port is to be used for serial communication with the BR-45 panel.

### Changing language from German

The BR-45 service software initially starts with German as the application language, to change this choose **Spezielles > Optionen**, the following dialogue appears:

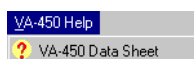


Choose english and click OK. The following dialogue appears:









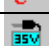





Click Ja, then close the BR-45 service software by choosing **Datei > Schliessen** or by clicking the the close window icon. Start the BR-45 service software in the manner described above; all dialogues and menus will now appear in English whenever the application is run.

### 3.3.1.5 VA-450 Help



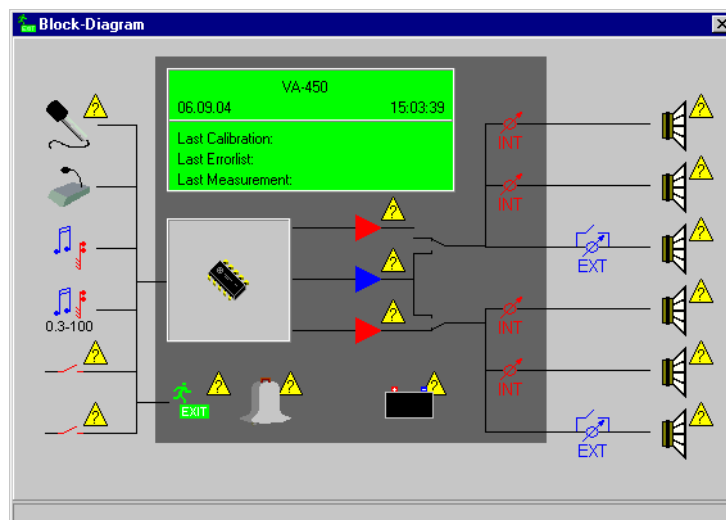
Menu item	Function
VA-450 Help > Data Sheet	Displays the Data Sheet for AutoVoice BR-45

### 3.3.1.6 Function Buttons

Icon	Label	Function
	Program VA-450 Engine	Transfers new system-software engine to the BR-45 panel
	Program General Settings	Transfers current configuration to the BR-45 panel
	Program Display Messages	Programs the BR-45 panel with the configured display messages; see sections 3.6 and 3.7
	Program Tolerances	Programs the BR-45 panel with the configured tolerances; see section 0
	Calibrate	Calibrates the BR-45 panel
	Measure	Measures the values for the BR-45 panel
	Read Errorlist	Reads the error list from the BR-45 panel; see sections 0 and 3.5 – 3.12
	Delete Errorlist	Deletes the error list from the BR-45 panel
	VA-450 Photo View	Reveals/hides the VA-450 Photo View window
	Block Diagram	Reveals/hides the Block Diagram window
	Device List	Reveals/hides the Device List window
	Error List	Reveals/hides the Error List window

Note that clicking a symbol of a window that is already open will cause that window to be closed.

### 3.3.2 Block Diagram



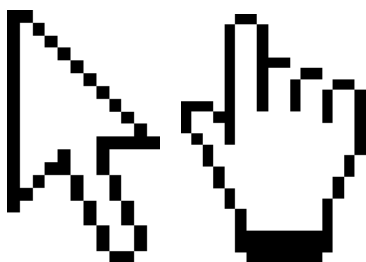
The Block Diagram window contains a diagrammatic representation of BR-45; the central space in the window depicts the BR-45 panel itself, the various icons distributed in the window depict various aspects of the system, these are covered in the following subsections.

### 3.3.2.1 Communication faults



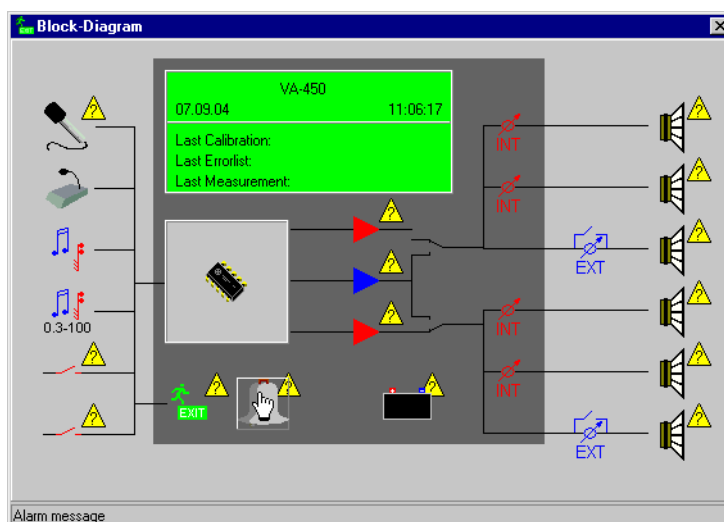
Communication faults are indicated by a question-mark symbol in a yellow, warning triangle. These are located by the relevant element in the Block-Diagram window.

### 3.3.2.2 Mouse-Pointer in the Block Diagram Window



When the mouse pointer is located over the Block Diagram window, it changes to a hand whenever the it is located over a hotspot – an area that can be clicked.




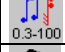


### 3.3.2.3 Context-Sensitive Help



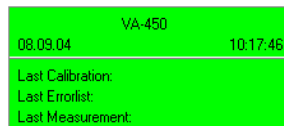
Note that the Block-Diagram window provides context-sensitive help in its lower left-hand corner; this area displays the title of the hotspot that the mouse pointer is located over.

### 3.3.2.4 Icons for Non-Configurable Elements

Certain elements in the Block-Diagram window display context-sensitive help, but do not provide any functionality, these are:

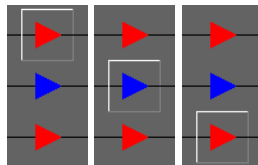
Icon	Title
	Internal attenuator (1, 2, 3, 4)
	External attenuator (1, 2)
	Music input
	AUX input 0.3–100V
	Microphone console
	Hot stand by switch (1, 2)

### 3.3.2.5 General settings



Clicking the green panel display symbol causes a dialogue to pop up; this dialogue contains various general configuration options for the BR-45 panel see section 3.4.

### 3.3.2.6 Booster 1/Hot Standby/Booster 2



Clicking the Booster 1, Hot Standby Booster or Booster 2 symbols causes a dialogue to pop up; the dialogues contain various configuration options for the built-in amplifiers, see section 3.5.

Note that if the device list is open, the relevant device is highlighted when the relevant device has the mouse pointer over it; see section 3.3.3.

### 3.3.2.7 Evacuation Message



Clicking this icon causes a dialogue to pop up; this contains various configuration options for Evacuation messages, see section 3.6.

Note that if the device list is open, the relevant device is highlighted when the relevant device has the mouse pointer over it; see section 3.3.3.

### 3.3.2.8 Alarm Message



Clicking this icon causes a dialogue to pop up; this contains various configuration options for Alarm messages, see section 3.7.

Note that if the device list is open, the relevant device is highlighted when the relevant device has the mouse pointer over it; see section 3.3.3.

### 3.3.2.9 Battery



Clicking this icon causes a dialogue to pop up; this contains various configuration options for the backup battery, see section 3.8.

Note that if the device list is open, the relevant device is highlighted when the relevant device has the mouse pointer over it; see section 3.3.3.

### 3.3.2.10 Fireman Microphone



Clicking this icon causes causes a dialogue to pop up; this contains various configuration options for the fireman microphone, see section 3.9.

Note that if the device list is open, the relevant device is highlighted when the relevant device has the mouse pointer over it; see section 3.3.3.

### 3.3.2.11 External Contact “Evacuation”



Clicking this icon causes causes a dialogue to pop up; this contains various configuration options for the external contact for evacuation, see section 3.10.

Note that if the device list is open, the relevant device is highlighted when the relevant device has the mouse pointer over it; see section 3.3.3.

### 3.3.2.12 External Contact “Alarm”



Clicking this icon causes a dialogue to pop up; this contains various configuration options for the external contact for alarm, see section 3.11.

Note that if the device list is open, the relevant device is highlighted when the relevant device has the mouse pointer over it; see section 3.3.3.

### 3.3.2.13 Zones 1, 2, 3, 4 and Direct Outputs 1 and 2



Clicking this icon causes a dialogue to pop up; this contains various configuration options for the external contact for alarm, see section 3.12.

Note that if the device list is open, the relevant device is highlighted when the relevant device has the mouse pointer over it; see section 3.3.3.

### 3.3.3 Device List

Icon	T+	T-	C	M	S
	32	31	.....	.....	
	32	31	.....	.....	
	32	31	.....	.....	
	32	31	.....	.....	
	31	31	.....	.....	
	32	31	.....	.....	
	32	31	.....	.....	
	32	31	.....	.....	
	.....	.....	.....	.....	
	.....	.....	.....	.....	
	.....	.....	.....	.....	
	.....	.....	.....	.....	

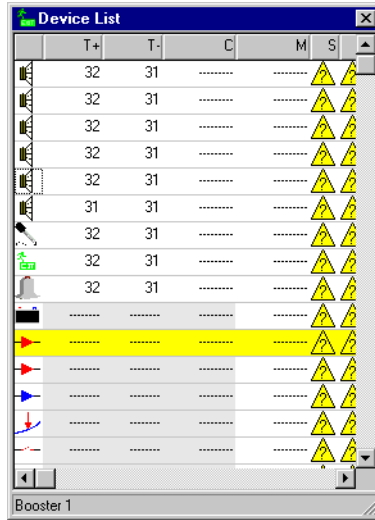
Booster 1

The device list contains every device in the BR-45 panel; these are represented by an icon with associated properties. The properties are displayed in the following format:

Icon T(olerance)+ T(olerance)- C(alibrate) M(easure) S(tatus)

Tolerance is indicated by a numeric value, other data appears if available.

### 3.3.3.1 Context-Sensitive Help



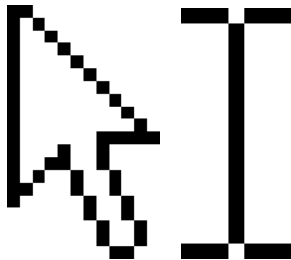
Note that the Device List window provides context-sensitive help in its lower left-hand corner; this area displays the title selected element.

### 3.3.3.2 Communication faults



Communication faults are indicated by a question-mark symbol in a yellow, warning triangle. These are located under S(status) by the relevant element in the Device list window.

### 3.3.3.3 Mouse Pointer in the Device List Window









After having clicked on a tolerance value (numbers listed under T+ and T-), the mouse pointer changes from an arrow to an I-bar to indicate that it is possible to change the tolerance value using the keyboard/number-pad.



### 3.3.3.4 Tolerance (T+ and T-)

T+ and T- are configurable either by using the incremental/stepper arrows or by entering a tolerance value using the keyboard/keypad. To change the values do one of these things:

- Click the tolerance value of the desired device, and then click the up/down arrows to increase/decrease tolerance +/- values
- Click the tolerance value of the desired device, and click on the tolerance value digits (note that the mouse pointer becomes an I-bar); this allows the use of the keyboard/keypad to change the tolerance values

Device List					
	T+	T-	C	M	S
	32	31	.....	.....	 
	32	31	.....	.....	 

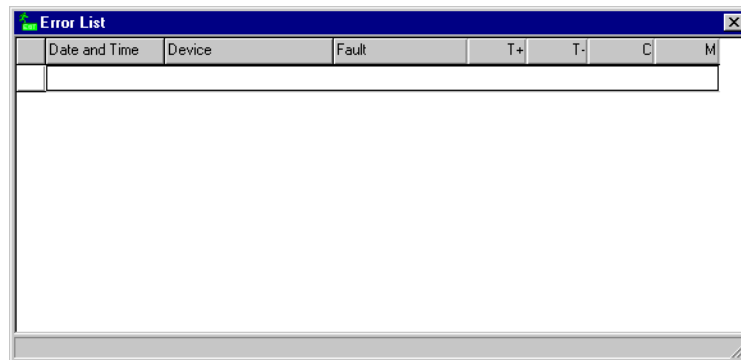
Note that only the tolerance of the following devices can be configured: Zones 1 – 4, Direct outputs 1 and 2, Fireman microphone, Evacuation message and Alarm message.

### 3.3.4 VA-450 Photo View



The VA-450 Photo View window presents two tabs with the labels Front view and Rear view; clicking these tabs presents a photographic representation of the front and rear, respectively, of BR-45. The front view of BR-45 is presented by default.

### 3.3.5 Error List

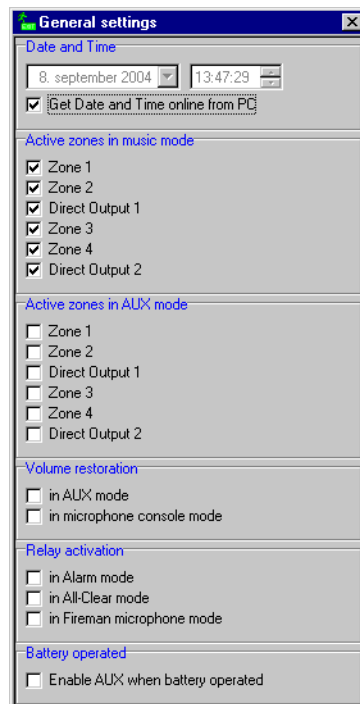


The Error list window presents errors stored in the error log in the following format:

Icon Date and Time Device Fault T(olerance)+ T(olerance)- Calibrate Measure

Note that the error list can be saved to file (as rich text) by clicking in the error list window with the right mouse button; a dialogue is presented which allows the user to provide a file name, and browse to the location where the file is to be saved. The file is saved with the extension ".rtf"; the default location is in the catalogue Text\_Chimes under the main VA-450 catalogue.

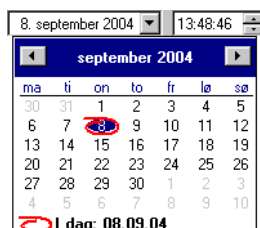
### 3.4 General settings



The General settings dialogue allows configuration of a number of options, these are covered in the following sections.

### 3.4.1 Date and Time

Date and Time can be configured in two ways: a) automatically from the service computer, or b) manually. By default, the date and time are configured automatically from the service computer, and the configuration manual options are greyed out. To configure the date and time manually, de-check the Get Date and Time online from PC checkbox; this will enable the manual configuration menus.



Clicking the drop-down menu for dates reveals a calendar (presented in the language specified in the operating system of the computer), use the mouse to click the desired date. Arrows left and right provide access to other months and years. Note a) that the date set on the service computer is indicated by a red ring and b) that the numeric values for date and year can be changed by clicking in the date menu to select the numeric values and then using the keyboard/keypad to enter a new number.

To change the time, click the hour, minute or second and use the arrows or keyboard/keypad to change the values.

### 3.4.2 Active Zones in Music Mode

Zones 1–4 and Direct outputs 1 and 2 can be selected for broadcast when BR-45 is in music mode by checking the zone/output checkboxes under Active zones in music mode. By default, all zones/outputs are checked.

### 3.4.3 Active Zones in AUX Mode

Zones 1–4 and Direct outputs 1 and 2 can be selected for broadcast when BR-45 is in AUX mode by checking the zone/output checkboxes under Active zones in AUX mode. By default, no zones/outputs are checked.

### 3.4.4 Volume Restoration

Options under Volume restoration allow configuration of volume restoration when AUX mode or microphone console mode are entered. To enable either of one or both options, check the checkboxes. No options are checked by default.

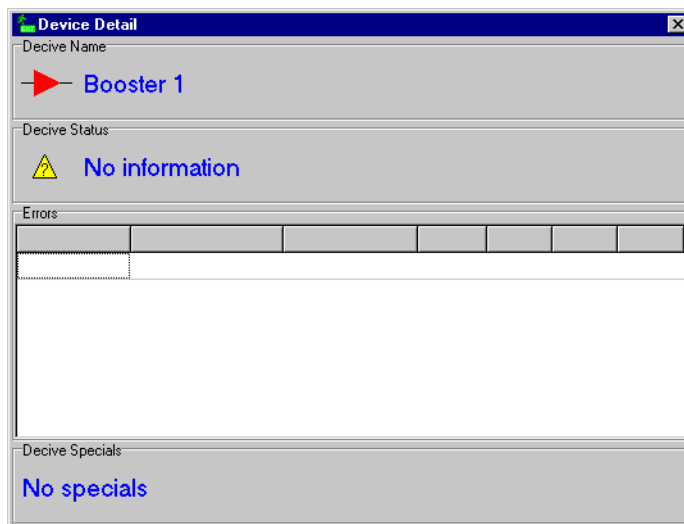
### 3.4.5 Relay activation

Relay activation can be configured when BR-45 enters any of the following modes: Alarm mode, All-Clear mode and fireman microphone mode. To configure any of these options, check the checkboxes. No options are checked by default.

### 3.4.6 Battery operated

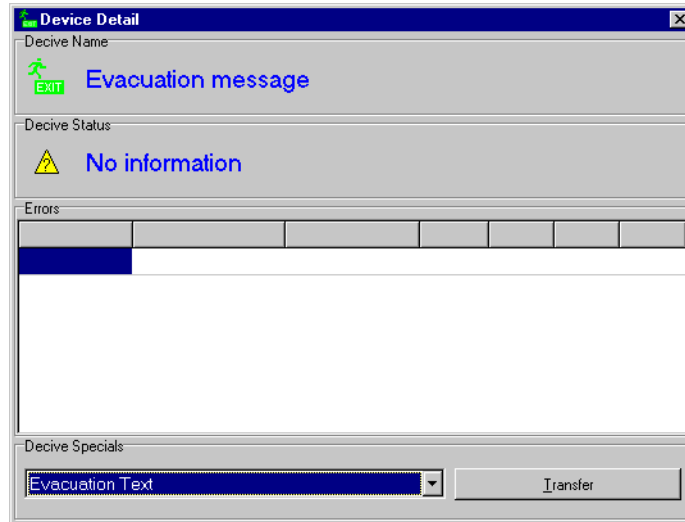
Only one option can be configured under this section: Enable AUX when battery operated, which enables the AUX input if BR-45 is being run on battery. To configure this option, check the checkbox; this option is unchecked by default.

## 3.5 Booster 1/Hot Standby Booster/Booster 2

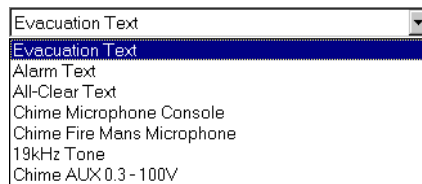


Booster device dialogues contain the following information: device name, device status and a device-specific error list. These devices allow no special configuration.

## 3.6 Evacuation Message



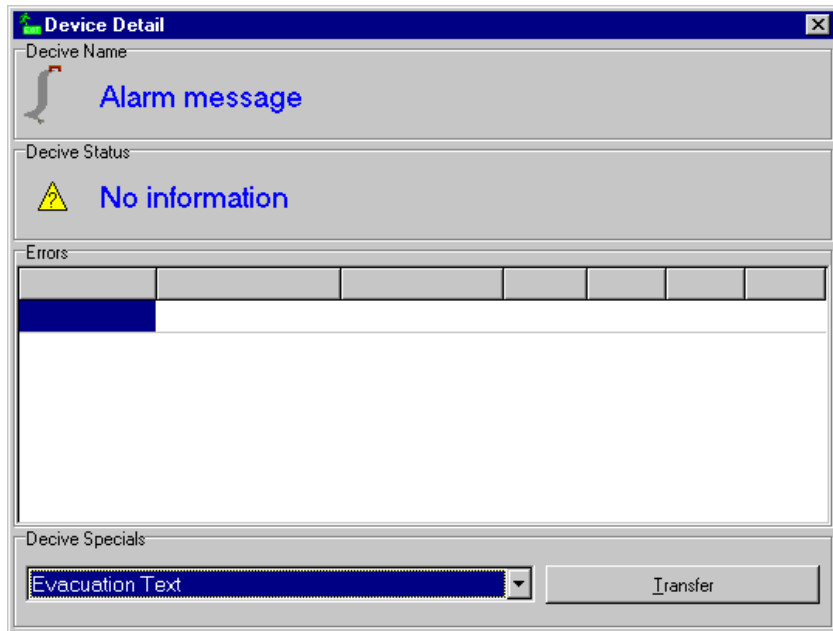
The evacuation message dialogue contains the following information: device name, device status and a device-specific error list. Additionally, the dialogue contains a device-specials drop-down menu and utility for uploading MP3 files to this device. This drop-down menu contains a list of message types, Evacuation Text is selected by default.



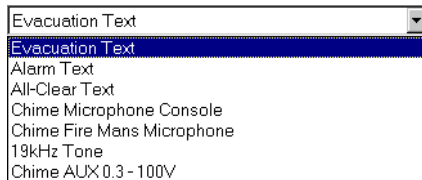
Select the desired message type and click Transfer; a dialogue pops up, allowing the user to browse to the desired MP3 file. The software, by default, looks for mp3 files in the directory Text\_Chimes under the main VA-450 directory. Select the desired file and click OK.

**Note: The size of MP3 files that can be uploaded to the BR-45 panel is limited to 250kb.**

### 3.7 Alarm Message



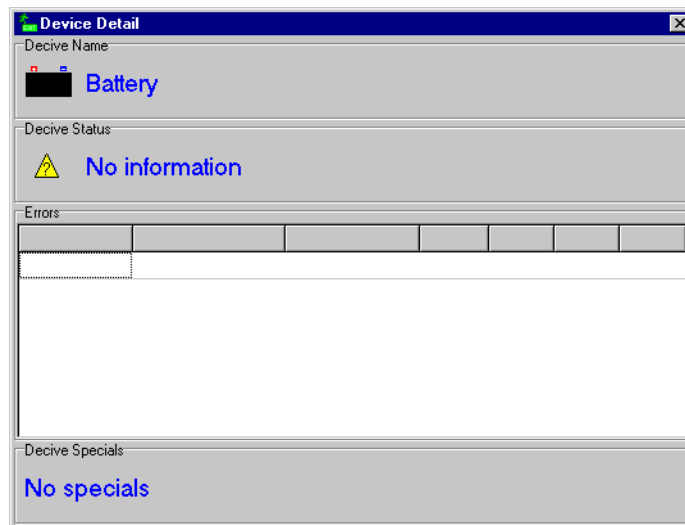
The alarm message dialogue contains the following information: device name, device status and a device-specific error list. Additionally, the dialogue contains a device-specials drop-down menu and utility for uploading MP3 files to this device. This drop-down menu contains a list of message types, Evacuation Text is selected by default.



Select the desired message type and click Transfer; a dialogue pops up, allowing the user to browse to the desired MP3 file. The software, by default, looks for mp3 files in the directory Text\_Chimes under the main VA-450 directory. Select the desired file and click OK.

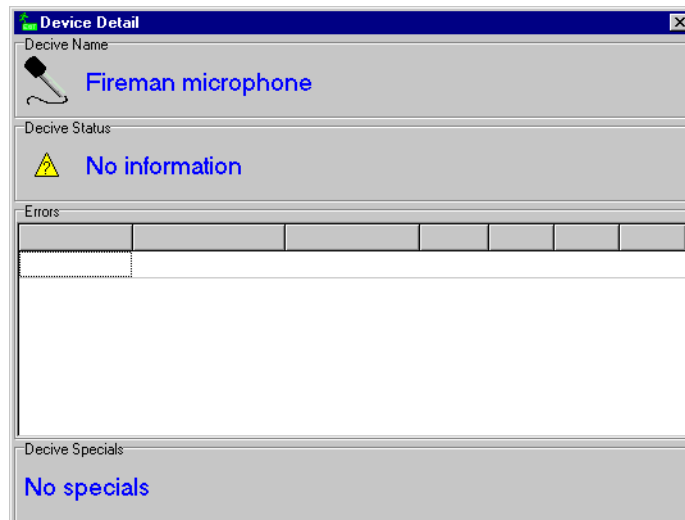
**Note: The size of MP3 files that can be uploaded to the BR-45 panel is limited to 250kb.**

## 3.8 Battery



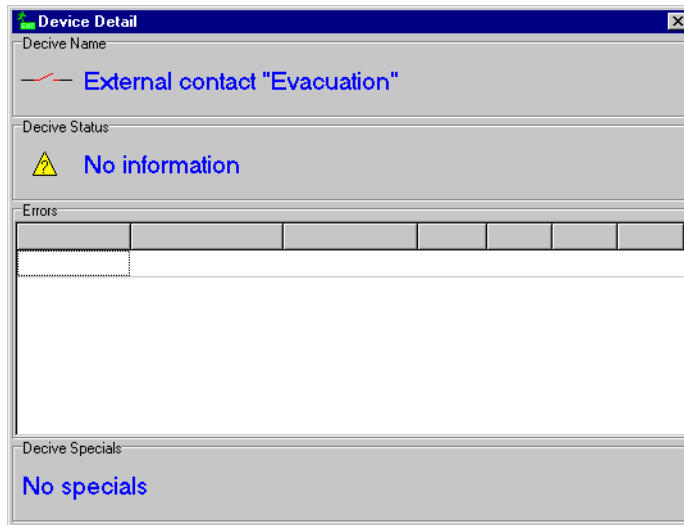
Battery device dialogue contains the following information: device name, device status and a device-specific error list. These devices allow no special configuration.

## 3.9 Fireman Microphone



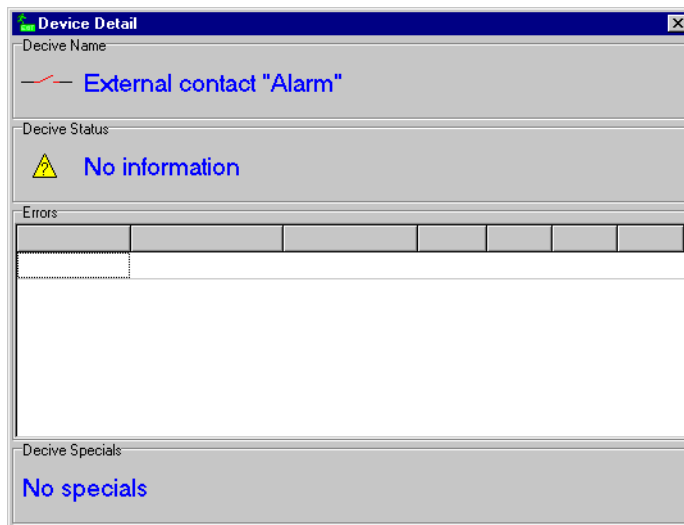
Fireman microphone device dialogue contains the following information: device name, device status and a device-specific error list. These devices allow no special configuration.

### 3.10 External Contact “Evacuation”



The External Contact “Evacuation” device dialogue contains the following information: device name, device status and a device-specific error list. These devices allow no special configuration.

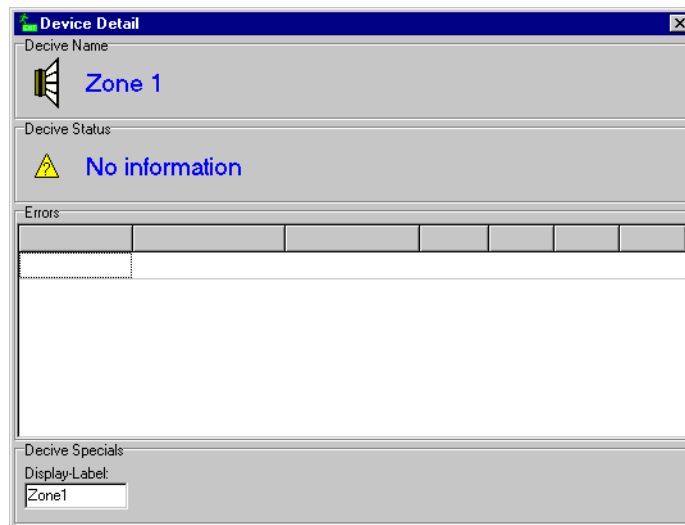
### 3.11 External Contact “Alarm”



The External Contact “Alarm” device dialogue contains the following information: device name, device status and a device-specific error list. These devices allow no special configuration.



## 3.12 Zones 1, 2, 3, 4, and Direct Outputs 1 and 2



The device dialogues for zones 1, 2, 3, 4, and Direct Outputs 1 and 2 contain the following information: device name, device status and a device-specific error list. These devices also allow the configuration of zone display labels under Device specials, the following default names are inserted:

Device	Label
Zone 1	Zone1
Zone 2	Zone2
Zone 3	Zone3
Zone 4	Zone4
Direct Output 1	ZoneD1
Direct Output 2	ZoneD2



## 4. Reader's Comments

---

Please help us to improve the quality of our documentation by returning your comments on this manual:

Title: *Configuration Software Handbook*

Ref. No.: *116-P-BR45/YGB, 2013-11-12*

Your information on any inaccuracies or omissions (with page reference):

Please turn the page

Suggestions for improvements

Thank you! We will investigate your comments promptly.  
Would you like a written reply?    Yes    No

Name:                   -----  
Title:                   -----  
Company:               -----  
Address:               -----  
                             -----  
                             -----  
Telephone:            -----  
Fax:                    -----  
Date:                   -----

Please send this form to:           Autronica Fire and Security AS  
  Box 5620  
  NO-7483 Trondheim  
  Norway  
  info@autronicafire.no



**Autronica Fire and Security AS** is an international company, headquartered in Trondheim, one of the largest cities in Norway. The company is owned by United Technologies Corporation and employs more than 380 persons with experience in developing, manufacturing and marketing of fire safety equipment. Our products cover a broad range of systems for integrated solutions, including fire detection systems, integrated fire and gas detection systems, control and presentation systems, voice alarm systems, public address systems, emergency light systems, plus suppression systems.

All products are easily adaptable to a wide variety of applications, among others, hospitals, airports, churches and schools, as well as to heavy industry and high-risk applications such as power plants, computer sites and offshore installations, world wide.

The company's strategy and philosophy is plainly manifested in the business idea:  
*Protecting life, environment and property.*

#### **Quality Assurance**

Stringent control throughout Autronica Fire and Security AS ensures the excellence of our products and services. Our products are CE marked and developed for worldwide standards and regulations, and conform to the CEN regulation EN54. Our quality system conforms to the Quality System Standard NS-EN ISO 9001:2008 and is valid for the following product and service ranges: marketing, sales, development, engineering, manufacture, installation, commissioning and servicing of suppression, integrated fire and gas detection and alarm systems, plus petrochemical, oil and gas instrumentation systems for monitoring and control.

**Autronica Fire and Security AS**  
Headquarters, Trondheim, Norway. Phone: + 47 73 58 25 00, e-mail: [info@autronicafire.no](mailto:info@autronicafire.no)

Visit Autronica Fire and Security AS's Web site: [www.autronicafire.com](http://www.autronicafire.com)