

WEATHER BRACKET BGWB

FOR BG-301 FLAME DETECTOR

Product Datasheet

Features

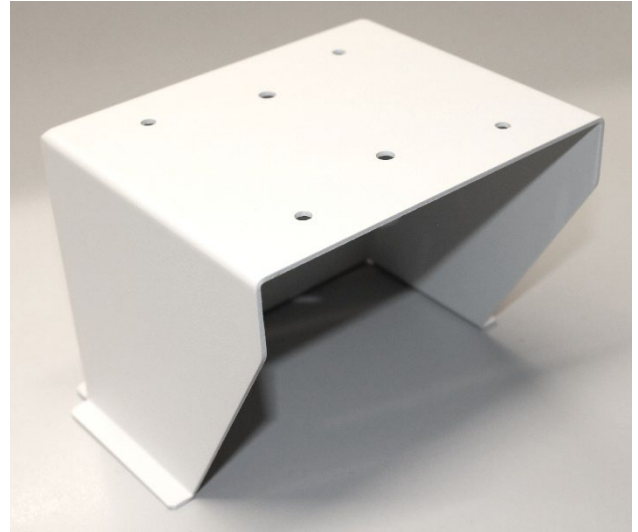
- Protects the flame detector in outdoor applications
- Fits to BG-301 mounting brackets BGJMB and BGMB45
- Robust powder coated aluminum

Description / Application

The weather bracket protects the flame detector when used for outdoor applications. The bracket fits with the following mounting accessories:

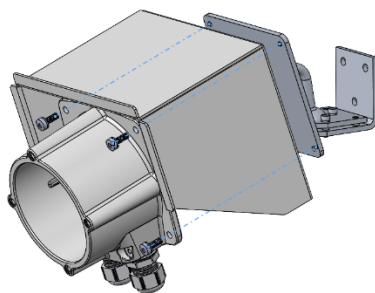
- Ball Joint Mounting Bracket 116-BGJMB
- Fixed Mounting Bracket 116-BGMB45

Detector mounting screws are included in BGJMB and BGMB45.

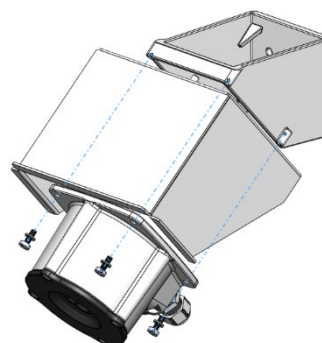


For more details, see “Technical Handbook” for the AutoFlame IR3 Flame Detector BG-301.

Mounting Alternatives



*Mounting on a Ball Joint
Mounting Bracket,
Part no. 116-BGJMB*



*Mounting on a Fixed
Mounting Bracket 45 degree,
Part no 116-BGMB45*

Technical Specifications	
Dimensions	(see dimension drawing)
Weight	570 g
Materials	Aluminium 5052
Color	RAL 9003

Accessories – Part Numbers

Name	Part Number	Description
Weather Bracket for BG-301 Flame Detector	116-BGWB	For outdoor applications.
Other accessories		
Ball Joint Mounting Bracket for BG-301 Flame Detector	116-BGBJMB	The ball joint on the bracket allows you to flexibly adjust the bracket/flame detector both vertically and horizontally. Including 4 mountings screws and lock washers for mounting detector
Fixed Mounting Bracket, 45 degree for BG-301 Flame Detector	116-BGMB45	For volumetric surveillance, fixes the flame detector at a 45° angle. Including 4 mountings screws and lock washers for mounting detector

Dimensions (mm)

