

# BALL JOINT MOUNTING BRACKET – BGBJMB

## FOR BG-301 FLAME DETECTOR

### Product Datasheet

#### Features

- Used for easily mounting AutoFlame flame detector BG-301 on to the wall
- Secure fixing of the flame detector
- Adjustable both horizontally and vertically
- For outdoor use a Weather Bracket can be used
- Aluminium

#### Description / Application

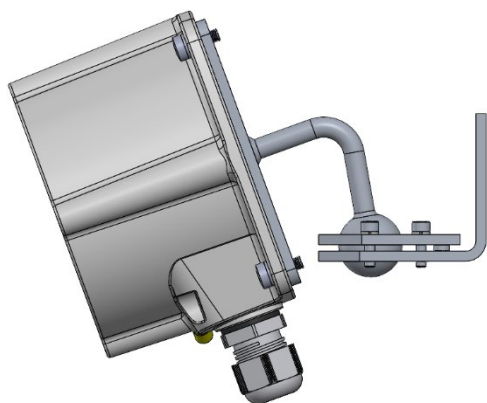
The Ball Joint Mounting Bracket is used for mounting the AutoFlame IR3 Flame Detector on to the wall.

The ball joint on the bracket allows you to flexibly adjust the bracket/flame detector both vertically and horizontally.

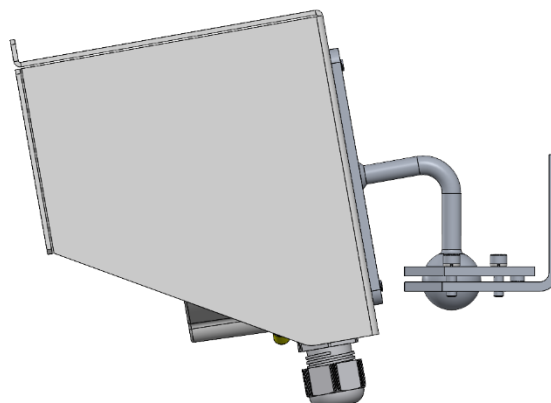
The flame detector can be mounted directly to the bracket for indoor use or together with a Weather Bracket, part no. 116-BGWB for outdoor use.



For more details, see “Technical Handbook” for the AutoFlame IR3 Flame Detector BG-301.



Side view of the bracket with the flame detector.  
Indoor use



Side view of the bracket with the Weather Bracket  
and flame detector.  
Outdoor use

## Ball Joint Mounting Bracket

Technical Specifications	
Dimensions	(see dimension drawing)
Weight	600 g
Materials	Stainless Steel
Color	Grey (steel)

## Accessories – Part Numbers

Name	Part Number	Description
Ball Joint Mounting Bracket for BG-301 Flame Detector	116-BGBJMB	The ball joint on the bracket allows you to flexibly adjust the bracket/flame detector both vertically and horizontally. Including 4 mountings screws and lock washers for mounting detector
<b>Other accessories</b>		
Fixed Mounting Bracket, 45 degree for BG-301 Flame Detector	116-BGMB45	For volumetric surveillance, fixes the flame detector at a 45° angle. Including 4 mountings screws and lock washers for mounting detector
Weather Bracket for BG-301 Flame Detector	116-BGWB	For outdoor applications.

## Dimensions (mm)

