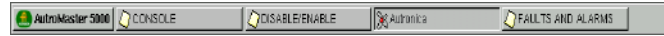


## The taskbar



The taskbar, by default, contains the following elements:

- AutoMaster
- Disable/Enable
- Console
- Faults and Alarms
- The presentation window (normally identified with a customer-specific title)

In addition, there are several optional menus depending on the number of modules that are included in each specific configuration.

The AutoMaster menu gives users access to AutoMaster functionality, while the other elements in the taskbar refer to windows on the screen. AutoMaster maximizes/minimizes default windows automatically.

**Note that the default windows cannot be closed. The taskbar may contain non-default programs and windows that have been minimized, these may safely be closed by the user.**

**AutoMaster:** clicking this button reveals the the following options:

**Disable/Enable:** opens a window for overview and control of disablements and detector groups (normally maximized).

**Console:** opens a window for system messages (normally run in the background – does not require user interaction)

**Faults and Alarms:** opens a window for system faults (normally maximized), containing fault reports for system faults from AutoSafe or BS-100 fire-alarm systems, plus active alarms. The information is presented in the following format:

<Date/Time> <Unit name> <Fault Class/Type >

A fault can be acknowledged by right-clicking the mouse inside the window and selecting Acknowledge.

**Presentation window:** the window which contains the customer-specific data and site mimic (normally maximized).

To return all windows to their original states and minimize non-default windows, select AutoMaster 5000 → Reset screen.

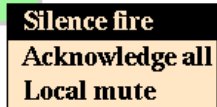
## Reset

The reset menu allows points to be reset; to do this, click a point to select it and choose Reset → Yes.

Selecting a point with the mouse and right-clicking the mouse reveals a menu. Points can also be reset from this menu by choosing Reset.

## Acknowledge

### Acknowledge



When a point in alarm is selected, this menu allows the following functions:

- Acknowledge → Silence fire – all sounders are silenced.
- Acknowledge → Acknowledge all – all alarms and faults are acknowledged
- Acknowledge → Local mute – the PC buzzer is silenced.

Right-clicking a point in the presentation window provides a second way of performing these actions.

## Presentation window

The AutoMaster presentation window provides the mimic function of AutoMaster; the mimic function is the graphical display of the alarmed area. The presentation window comprises:

- **Detail Pane:** displays the focused area of the mimic
- **Navigation Pane:** displays the entire mimic area, indicating current focus
- **Miscellaneous Buttons:** allow the user to switch to different mimics, and turn on/off information layers. The total number of buttons depends on the complexity of your system..



## Buttons

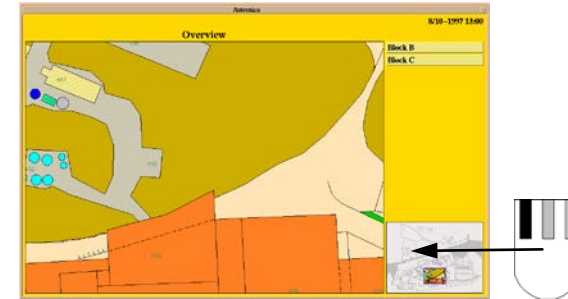
The "Block B" button is used to change to a mimic of Block B.

The "Block C" button is used to change to a mimic of Block C.

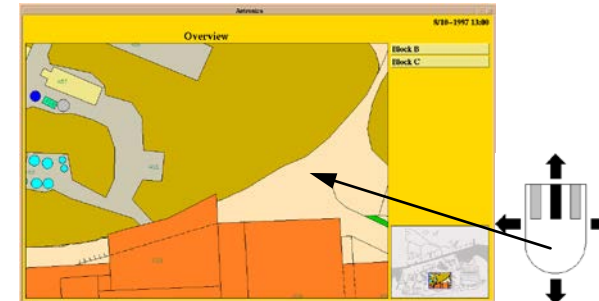
## Navigation Technique

There are three ways to navigate in AutoMaster.

- A.** Position the cursor in the Navigation Pane and click outside the frame that represents the focused area displayed in the Detail Pane.



- B.** Position the cursor in the Detail Pane and hold down the middle mouse button while moving the mouse.



- C.** Position the cursor within the frame of the navigation pane and hold down the left mouse button while moving the mouse.



## Changing between mimics

The system can contain many different mimics. In this example, the system contains 3 mimics.

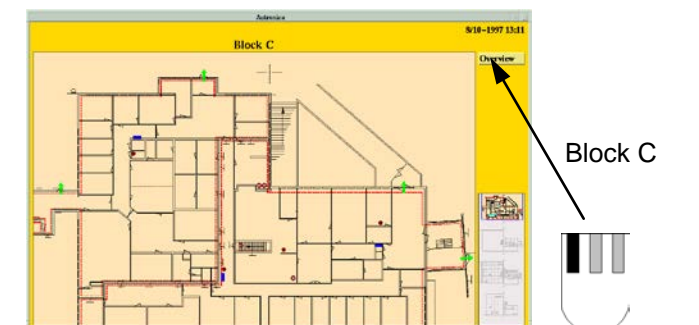
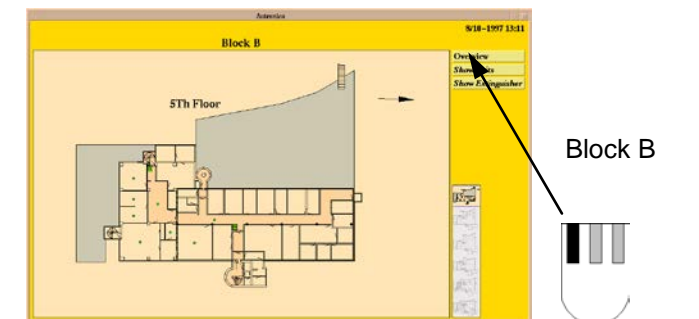
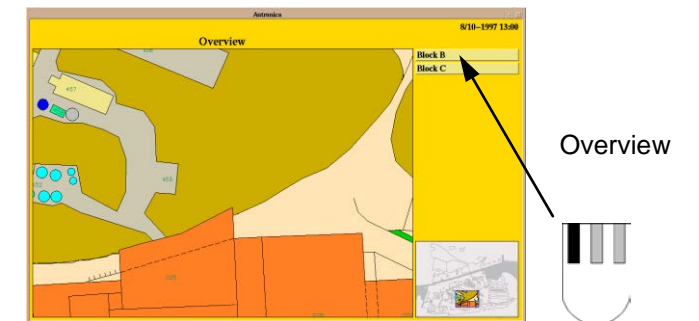
**Overview** This picture provides an overview of the entire alarmed area.

**Block B** Alarm mimic for block B. This display contains all the floors and detectors in block B.

**Block C** Alarm mimic for block C. This display contains all the floors and detectors in block C.

The system can also include other mimics, especially land-based systems.

To change mimics, left-click one of the buttons on the right hand side of the pictures.



## Alarm situation

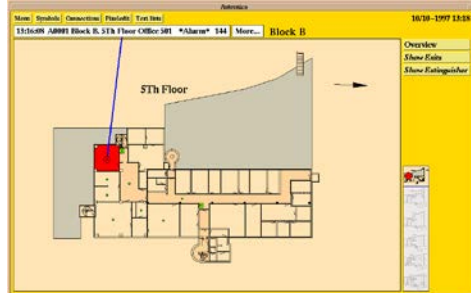
When an alarm is given, an alarm window will automatically appear accompanied by an audio signal. The system will also show any additional text attached to the detector giving alarm.

In the event of alarm, the following procedure should be followed:

- Investigate the alarm location.
- Deactivate the alarm sounders on the control panels by clicking the Silence button.
- When it is safe to reset the control panels, click and hold the Reset menu and choose Yes.

**Note: This is only a guideline for operating fire-alarm control panels in alarm situations. In most instances, the operator should follow local procedures for dealing with alarms.**

## Alarm display



When an alarm is given, the mimic will change to indicate the alarm location. The Detail Pane will show a flashing detector until you click the "Silence" button. The Information Pane will show the analogue value of the detector, and this information will also be marked in red in the room/area where the detector is located (providing that this is defined).

## Investigate the alarm location

Check the alarm location to see whether there is a fire.

## Silence the alarm

Acknowledge

Silence fire  
Acknowledge all  
Local mute

Silence the alarm by choosing Acknowledge → Silence fire. The detector status will change from a flashing symbol to a static symbol, and the detector in the reference display will disappear.

## Reset the fire-alarm control panel

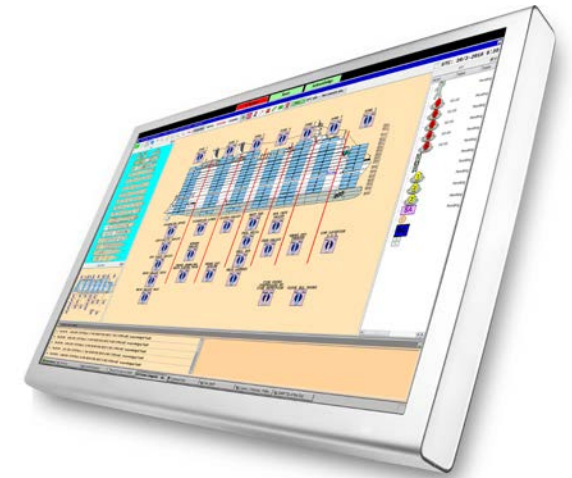
Reset the control panel choosing Reset → Yes. The system will return to normal operation after an interval of a few minutes.

## Prewarning and detector error

Prewarnings and detector errors are indicated in the same way, except that there are no changes in the mimic.

# AUTRO MASTER

ISEMS



# Shortform Userguide



Protecting life, environment and property...