



# Operator's Handbook

AutroMaster V Presentation System



COPYRIGHT ©

This publication, or parts thereof, may not be reproduced in any form, by any method, for any purpose.

Autronica Fire and Security AS and its subsidiaries assume no responsibility for any errors that may appear in the publication, or for damages arising from the information in it. No information in this publication should be regarded as a warranty made by Autronica Fire and Security AS. The information in this publication may be updated without notice.

Product names mentioned in this publication may be trademarks. They are used only for identification.



# Table of Contents

---

<b>1. About this handbook .....</b>	<b>2</b>
1.1 The reader .....	2
1.2 Reference documentation .....	2
1.3 Drawings and Screenshots in this manual .....	2
<b>2. General Arrangement (GA) Plan .....</b>	<b>3</b>
2.1 Introduction .....	3
2.2 Opening the GA PLAN .....	3
2.3 Main View Buttons .....	4
2.4 Memory Usage (Service Access Level required) .....	4
2.5 Navigation Pane .....	5
2.6 Building/Floor Selector .....	5
2.7 Toggling Layers On/Off .....	6
2.8 Floor Plan .....	7
2.9 Zooming .....	8
2.9.1 Zooming Alarmed Area in or out .....	8
2.9.2 Full View .....	8
2.9.3 Default Zoom .....	8
2.10 Palette Pane .....	9
2.10.1 Properties .....	10
2.10.2 Map Location .....	10
2.10.3 Actions .....	11
2.10.4 Groups .....	12
2.10.5 LED Activation .....	13
2.11 Selecting a Point .....	13
2.11.1 General .....	13
2.11.2 Selecting a Point in Alarm .....	14
2.11.3 Selecting a Point in Prealarm .....	14
2.11.4 Selecting a Disabled Point .....	15
2.11.5 Selecting a Point in Fault Status .....	15
2.12 Selecting Multiple Points / Global Selection .....	16
2.12.1 Selecting Multiple Points .....	16
2.12.2 Adding Selected Points to a Global Selection .....	17
2.13 Zooming a Drawing In/Out .....	18
2.14 GA Plan Config Button .....	18
<b>3. Status Information .....</b>	<b>19</b>
3.1 Introduction .....	19
3.2 The Status Window .....	19
3.3 Sorting a List in Ascending/Descending Order .....	20
3.4 Minimizing or Maximizing the Status Window .....	20
3.5 Alarms .....	21
3.6 Faults .....	22
3.7 Disabled .....	23
3.8 Class .....	24

3.9	Supervisory .....	25
3.10	Activated.....	26
3.11	Test.....	27
<b>4.</b>	<b>In an Alarm Situation .....</b>	<b>28</b>
<b>5.</b>	<b>Global Utility Functions.....</b>	<b>29</b>
5.1	Introduction.....	29
5.2	USB .....	29
5.3	Role .....	29
5.4	Day/Night Mode.....	30
5.4.1	Day Mode (example).....	30
5.4.2	Night Mode (example).....	31
5.5	Print.....	31
5.5.1	Overview .....	31
5.5.2	Printing/Saving a pdf file .....	33
5.5.3	Printer Settings.....	34
5.5.4	Local Mute Button .....	34
5.6	Search .....	35
5.7	Access Levels .....	37
5.8	Service Menu .....	38
5.8.1	Overview .....	38
5.8.2	Change Language.....	38
5.8.3	License Administration.....	39
5.8.4	Managing the Master Configuration.....	39
5.8.5	Users.....	42
5.8.6	About.....	43
5.8.7	Terminal .....	43
5.8.8	Client Settings .....	44
5.8.9	System Settings .....	45
5.8.10	Enable (/Disable) Keyboard .....	46
5.8.11	Exit .....	46
<b>6.</b>	<b>Group Management .....</b>	<b>47</b>
6.1	Introduction.....	47
6.2	Opening the GROUPS View .....	48
6.3	Adding a Group .....	49
6.4	Setting Performance/Operation Class for Detectors in a Group.....	51
6.5	Saving the Properties for a Group.....	53
6.6	Disabling Group Members.....	53
6.7	Enabling Group Members .....	54
6.8	Activating/Deactivating a Group.....	55
6.8.1	Activating a Group.....	55
6.8.2	Deactivating a Groups .....	55
6.9	Group Activation/Deactivation Timer.....	56
6.10	Deleting a Group .....	59
6.11	Modifying a Group .....	59
6.12	Overlapping Groups with Different Properties.....	60
6.13	Group Status .....	61

6.14 Deleting Group Members ..... 61

**7. Generating Reports ..... 62**

7.1 Introduction..... 62  
7.2 Preparing to Generate a Report..... 62  
7.2.1 Generate Report Window ..... 62  
7.2.2 Report of the Current Status ..... 63  
7.2.3 Historical Report..... 63  
7.2.4 Setting Analog Sensor Interval ..... 64  
7.3 Saving a Report as a Preset Report ..... 64  
7.4 Generating a Report..... 65  
7.5 Printing Reports..... 65

**8. Operating a Gessler Emergency Light System  
from AutoMaster V ..... 66**

8.1 Description ..... 66  
8.2 Viewing Status Information..... 66  
8.3 Actions..... 68

# 1. About this handbook

---

This handbook provides information to successfully operate AutoMaster V.

## 1.1 The reader

The handbook is intended for personnel who operate AutoMaster V.

## 1.2 Reference documentation

The documentation consists of the following documents:

Document Name	File name
System Description	AutoMaster-V-System-Description-eng
Installation, Configuration and Commissioning Handbook	AutoMaster-V-Installation-Configuration-Commissioning-Handbook-eng
Operator's Handbook	AutoMaster-V-Operator's-Handbook-eng
User Guide	AutoMaster-V-User-Guide-eng
Datasheet (system)	AutoMaster-V-System-Datasheet-eng

## 1.3 Drawings and Screenshots in this manual

Note that drawings and screenshots in this manual are examples. The appearance may differ depending on the use of colorfill, day/night mode, etc.

## 2. General Arrangement (GA) Plan

### 2.1 Introduction

The GA PLAN (General Arrangement Plan) comprises the following panes and functions:

- Navigation Pane, providing an overview of the entire alarmed area based on the site specific drawings.
- Floor Selector, allowing you to select one of several floors
- Floor Plan (Detail Pane), allowing you to display the focused area
- Palette Pane, providing information for a selected point
- Layers, allowing you to toggle different layers ON and OFF

In this view you can also;

- select points (detectors, manual call points, etc.).
- hide/show layers
- zoom in/out in the Navigation Pane and Floor Plan using the mouse scroll wheel
- see full view: when you open the GA PLAN, and you zoom in and out, or move the view vertically or horizontally, you can easily move back to the starting point by clicking "Full view"

### 2.2 Opening the GA PLAN

- Click the GA PLAN button on the left vertical bar

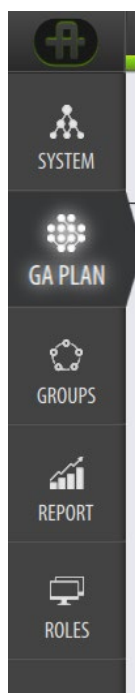
Status Information Bar



## 2.3 Main View Buttons

In the GA Plan (General Arrangement Plan) the Main View Buttons are located on the leftmost vertical bar.

The System View button is always the uppermost button. The other buttons are configurable for each defined Role (i.e. which buttons are added and the order of the buttons).

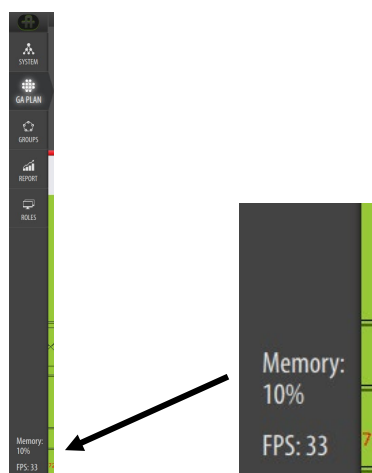


The different views for these buttons include:

- System View; provides system information and a tree structure of added panels with status indication and available commands.
- GA Plan View; provides an overview of the entire alarmed area based on the site specific drawings, including Navigation Pane, Building/Floor Selector, Floor Plan, Layers, Palette Pane, navigation functionality, ON/OFF layers, zooming.
- Groups View; allows users to create groups with specific properties (class settings and disablements) for selected points and temporarily activate/deactivate these groups
- Report View; allows users to preview, print and presave various reports
- Roles View; this view is only available in Configuration Access Level. Client Roles are added in this view. A Client Role defines all properties and the layout of a Client, including the type/number of buttons in the left vertical bar and the status views in the horizontal top bar.

## 2.4 Memory Usage (Service Access Level required)

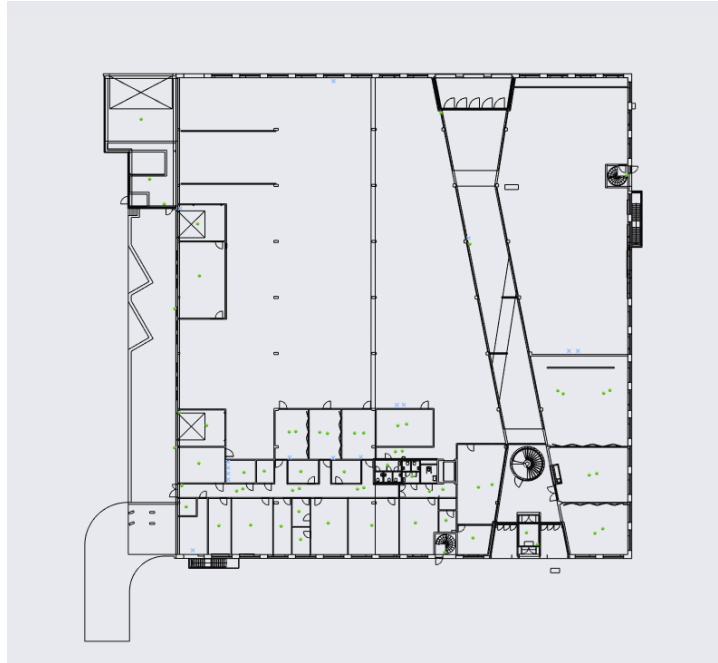
The current memory usage in % is shown on the bottom of the left side bar. Memory Usage will only appear in Access Level 4 (Service).





## 2.5 Navigation Pane

The Navigation Pane provides an overview of the entire alarmed area based on the site specific drawings.



## 2.6 Building/Floor Selector

The Building/Floor Selector allows you to select one of several buildings and floors.

- Click the building in question, then scroll to select the floor.

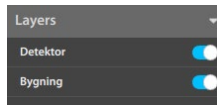


## 2.7 Toggling Layers On/Off

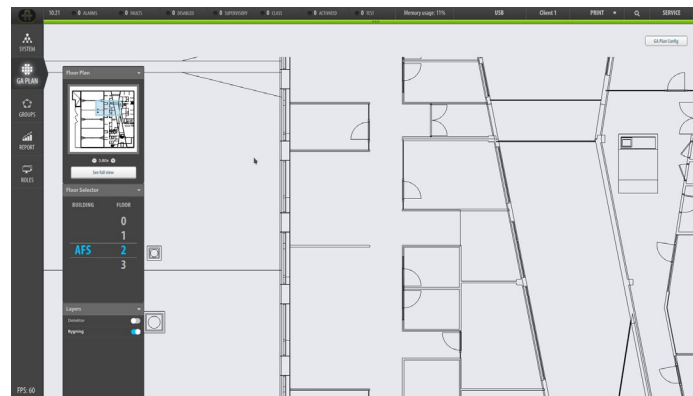
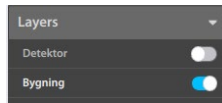
The Layers menu allows you to toggle the visibility of a selected layer On and Off.

- Select the layer, then use the slide button to toggle the layer On (slide the button to the right) and Off (slide the button to the left).

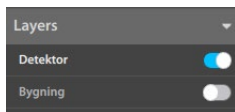
Examples:



All layers are visible



The layer with points is toggled Off

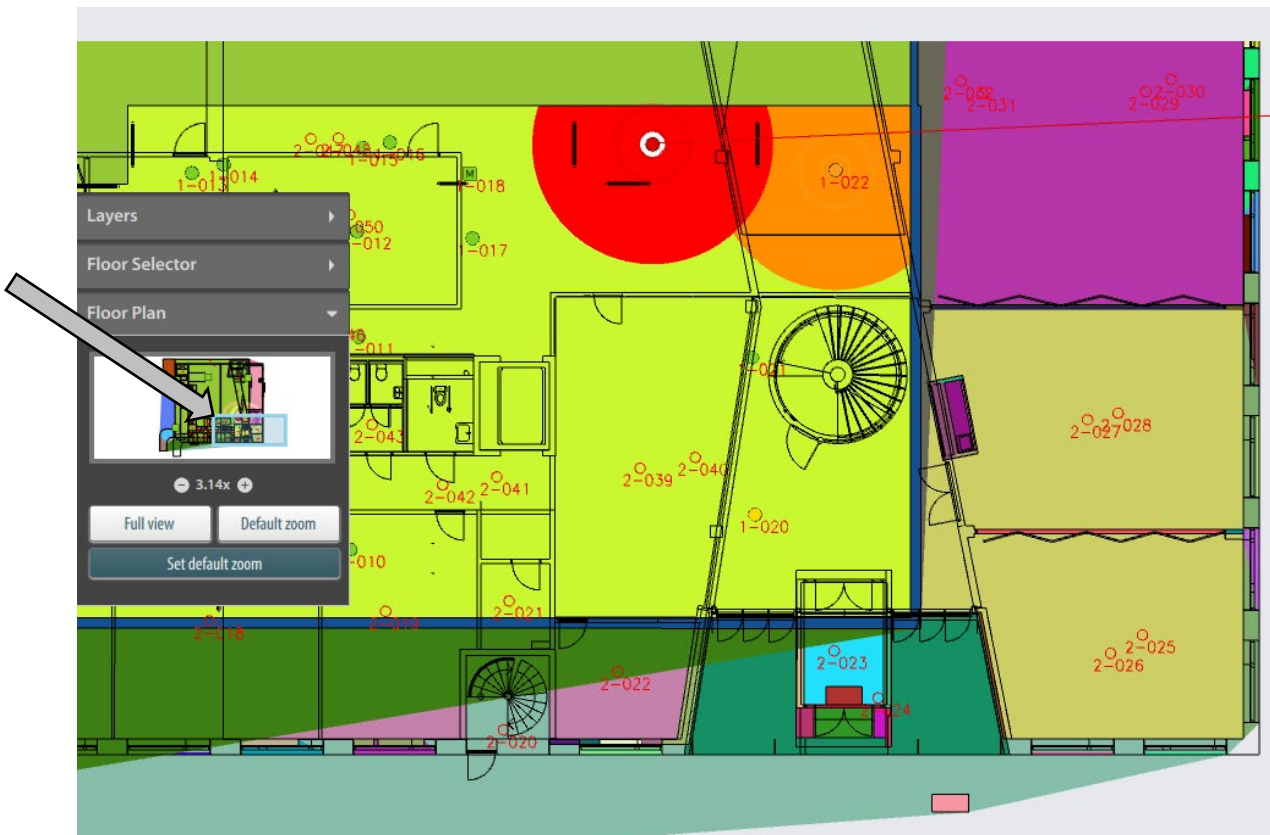
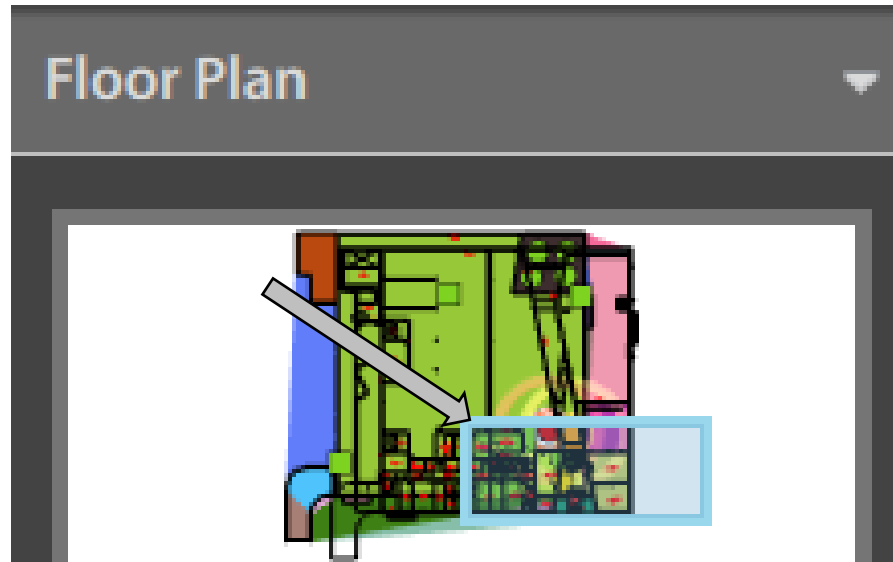


The GA plan layer is toggled Off

## 2.8 Floor Plan

The Floor Plan displays the focused area of the drawing.

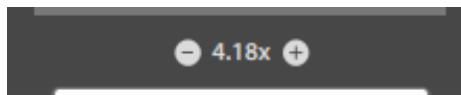
- Click inside the Floor Plan (inside the blue rectangle), then move the mouse in any direction to display a focused area.



## 2.9 Zooming

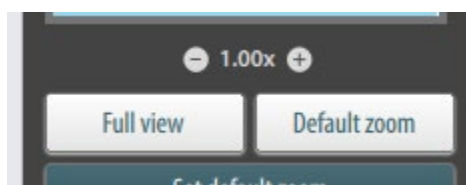
### 2.9.1 Zooming Alarmed Area in or out

- To zoom the alarmed area in or out, click the - or + button, or use the mouse wheel



### 2.9.2 Full View

- To view the entire alarmed area, click the “Full view” button



### 2.9.3 Default Zoom

*NOTE: Requires Configuration or Service Access Level.*

A default zoom can be set for each drawing (Floor Plan). If you zoom to another zoom level, you will be able to quickly return this default zoom level by clicking the Default View button.

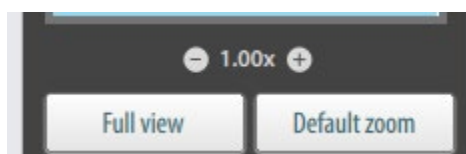
- Go to the drawing in question
- Access Configuration or Service Access Level

If you have accessed the required access level, the *Set default zoom* button will be shown

- Zoom to the desired level, clicking the - or + button, or using the mouse wheel
- Click the *Set default zoom* button to save the default zoom level

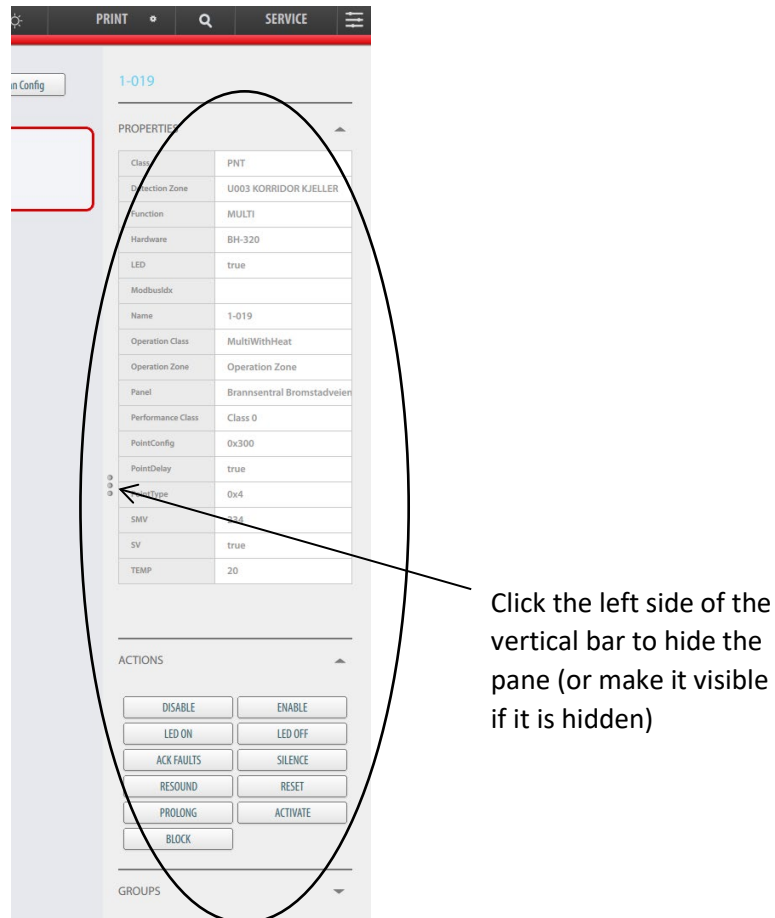


Regardless of which access level you are using later, you can now choose between Full View and the predefined Default View, in addition to zooming in or out.



## 2.10 Palette Pane

Information for a selected point is shown in the Palette Pane (the rightmost pane).



The Palette Pane provides the following information:

- Properties
- Actions
- Groups
- Global Selection (appears when clicking the search button in upper horizontal status bar)

### 2.10.1 Properties

Properties will automatically appear when a point is selected.



- To open or close this menu, simply click the arrow up or arrow down button on the right hand side of PROPERTIES.

The Properties view provides the tag name and detailed information for the selected point. The information provided will vary depending on the point/unit in question.

### 2.10.2 Map Location

The map location is found in the Palette Pane. In this example, A1 means building A and floor 1.



### 2.10.3 Actions

In the Actions menu it is possible to perform actions for a selected point. The ACTIONS available depends on the point/unit in question.

The screenshot below shows different available actions:



For example, the actions (DISABLE, ENABLE, LED ON, LED OFF) for a detector are shown below.

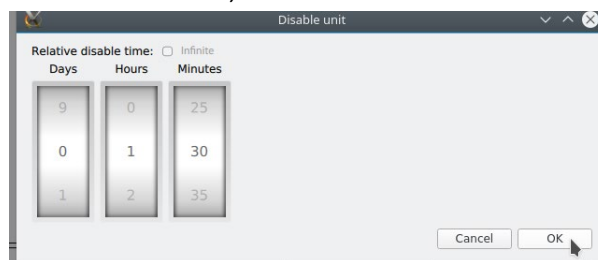
If a fire alarm device (FAD) is selected, only the actions DISABLE and ENABLE will be available.

#### 2.10.3.1 Disable a Point

- To disable the selected point, click the DISABLE button,



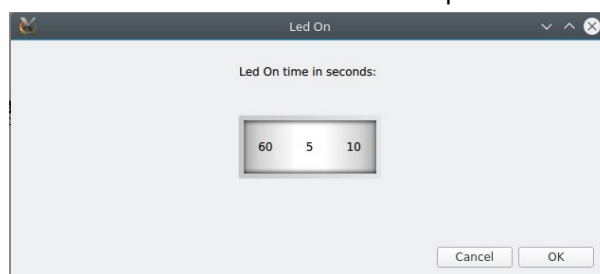
- Select the relative disable time (Days, Hours, Minutes) or check the Infinite box, then click OK



The selected point can be enabled by clicking the ENABLE button.

### 2.10.3.2 LED On/Off

- To turn the LED on for a selected point with a LED, click LED ON



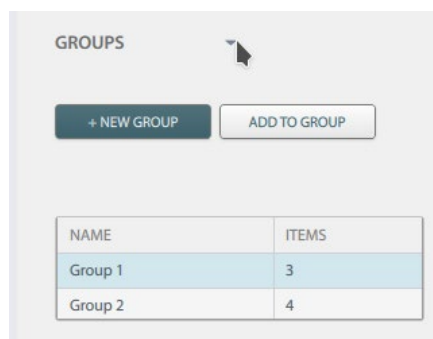
- Select the time the LED is to be ON (up to 60 seconds), then click OK

### 2.10.4 Groups

In the Groups menu, all existing groups are listed (in the example below, two groups are listed. The number of points/units added to each group is also shown (no tag names are shown)).

- To open or close this menu, click the arrow button on the right hand side of GROUPS

You can add new groups and add selected points to an existing group.



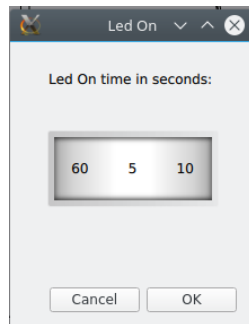
- To add a new group, click the NEW GROUP button, then insert a group name and click Create
- To add a selected point to a group, select the group in question (highlighted), then, at the location in the GA Plan, click the point/unit in question
- Click the ADD TO GROUP button (the point will be shown in the Groups View).

For more information, see Group Management, chapter 6.



## 2.10.5 LED Activation

- To turn the LED on for a selected point with a LED, click LED ON



- Select the time the LED is to be ON (up to 60 seconds), then click OK

## 2.11 Selecting a Point

### 2.11.1 General

- To read data from a specific point (for example, a detector) in the Navigation Pane, left-click the point in question

The selected point is indicated by a line linking it to an information box providing useful information (depending on the type of point; the tag name, the status, stored measured values (SMV), temperature, detection zone and the status of the selected detector).

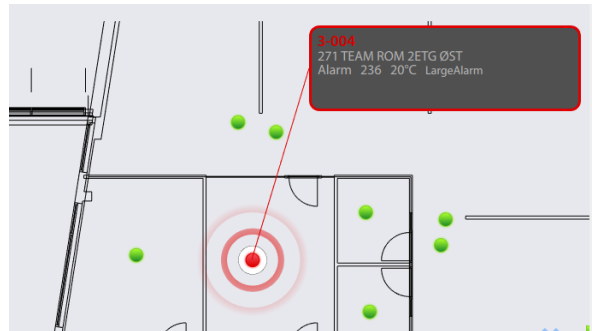


In the Navigation Pane, a point in normal status is shown in green, as well as the tag name (as shown above).

Detailed information related to the selected point is shown in the Palette Pane on the right hand side (see Information Panel, chapter 2.9).

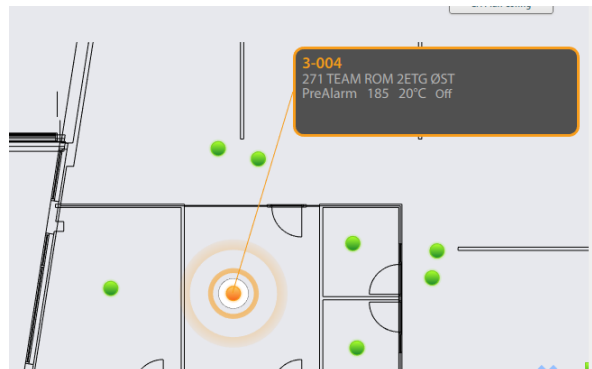
### 2.11.2 Selecting a Point in Alarm

In the Navigation Pane a point in alarm is always in red. The tag name is also in red.



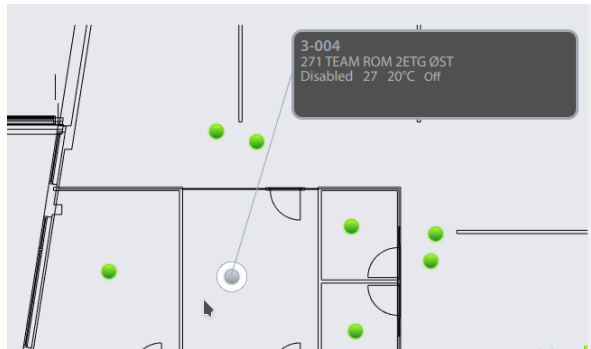
### 2.11.3 Selecting a Point in Prealarm

In the Navigation Pane a point in Prealarm is always in orange. The tag name is also in orange.



### 2.11.4 Selecting a Disabled Point

In the Navigation Pane, a disabled point is always shown as a grey point.



### 2.11.5 Selecting a Point in Fault Status

In the Navigation Pane, a point in fault status is always shown in yellow, as well as the tag name.



## 2.12 Selecting Multiple Points / Global Selection

### 2.12.1 Selecting Multiple Points

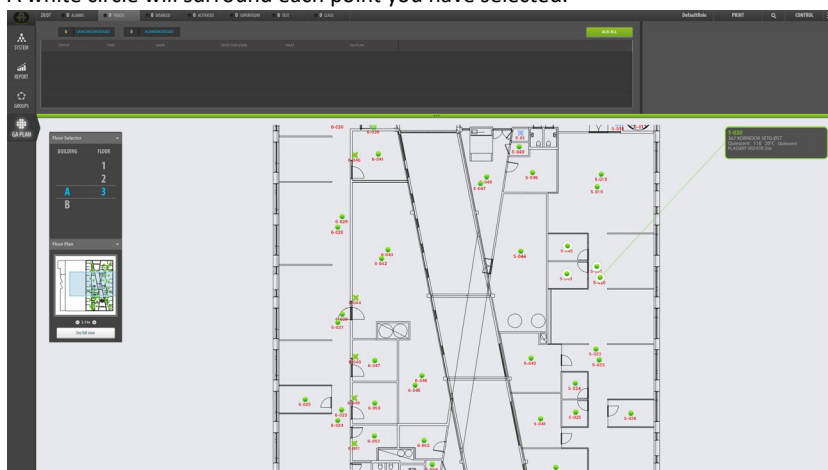
In the GA Plan you can select multiple points. This is useful if you want to execute actions for certain points you have selected, including the following actions:



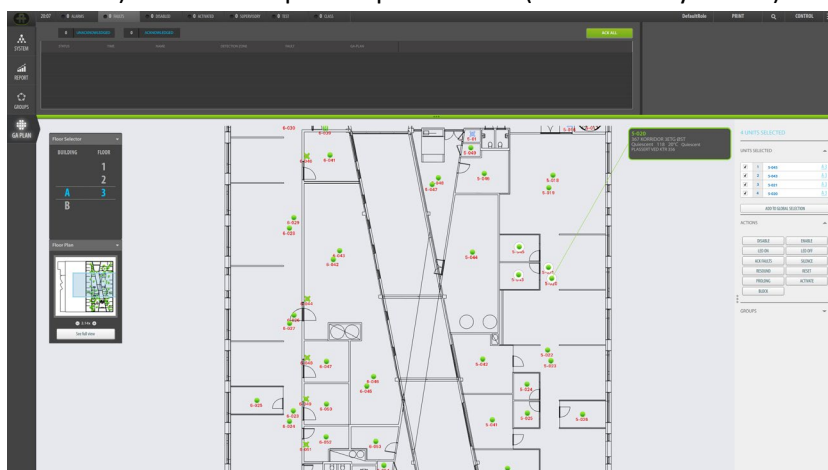
For example, you can easily disable all the points you have multi-selected.

- To select multiple points, click and hold the Shift button, then select the points one by one with the left mouse button

A white circle will surround each point you have selected.

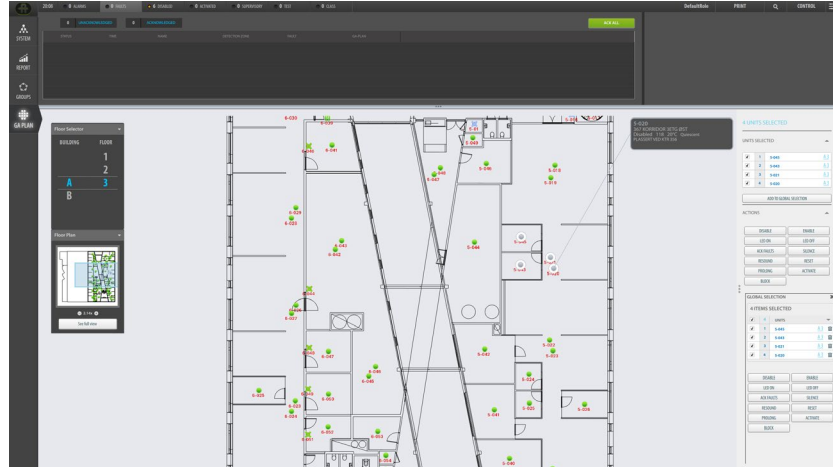


- Click the vertical bar on the right hand side (indicated by an arrow above) to make the palette pane visible (if not already visible)



In the palette pane (UNITS SELECTED), the checkboxes for the points you have selected are checked (it is possible to uncheck each if necessary).  
If you want to execute an action for the selected points, click the desired action, for example, disable.

- For example, to disable all points listed in the GLOBAL SELECTION window, click DISABLE

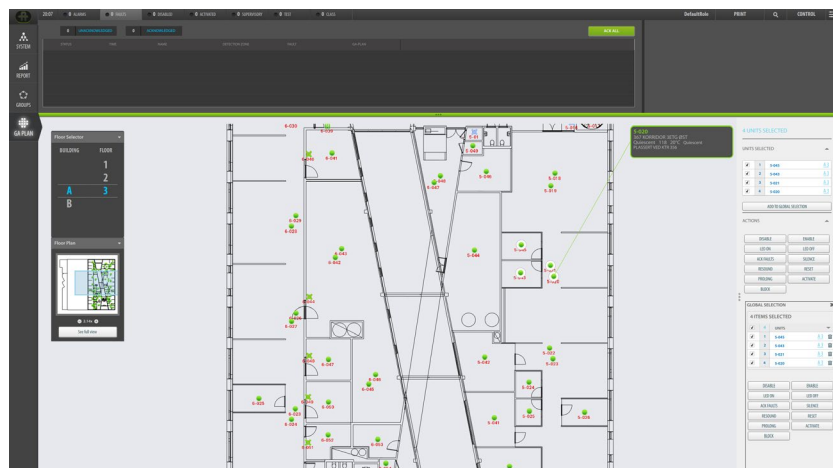


In this example, the selected points in the GA Plan will change their color from green to gray, indicating that they are disabled.

## 2.12.2 Adding Selected Points to a Global Selection

In certain cases, you may wish to add more points to a list, but the additional points you want to add are not shown in the current GA Plan and you need to use the search functionality to find them. In this case, the points you have selected may be added to a global selection, and you can do a global search for other points and add additional points to the same global selection.

- Click the ADD TO GLOBAL SELECTION button



The GLOBAL SELECTION window will list all units you have added.

- Use the search functionality to search for other points you want to add
- Click the ADD TO GLOBAL SELECTION button when a new point is found

## 2.13 Zooming a Drawing In/Out

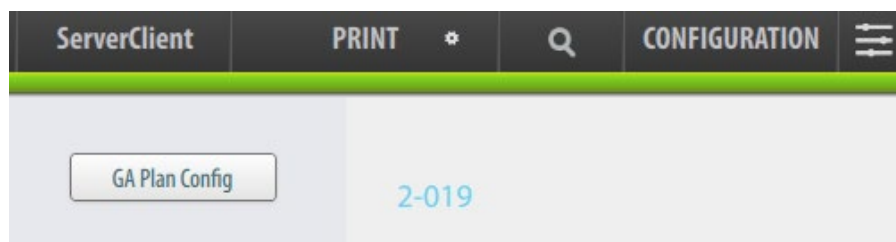
The mouse wheel is used to zoom the selected drawing in and out.

- Click inside the Navigation Pane or Floor Plan (Detail Pane), then scroll the mouse wheel to zoom in or out

For detailed information on zooming, see chapter 2.9.

## 2.14 GA Plan Config Button

In the upper right hand corner of the screen there is a button called GA Plan Config.



When clicking this button, the Configure GA Plan view will appear, allowing you to configure the General Arrangement Plan (GA Plan).

For more information, refer to the Installation, Configuration and Commissioning Handbook.

## 3. Status Information

### 3.1 Introduction



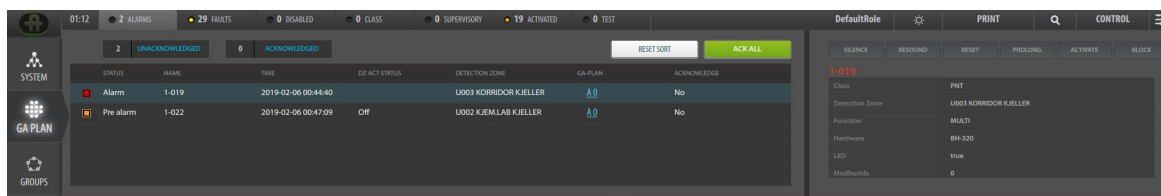
All status information can be found on the uppermost horizontal Status Bar, including the following topics (configurable):

- Alarms
- Faults
- Disabled
- Class
- Supervisory
- Activated
- Test

### 3.2 The Status Window

Each topic provides a list with relevant information and possible actions (if available).

- To view status information and detailed information for a selected topic, click the one in question (in this example, ALARM is shown)



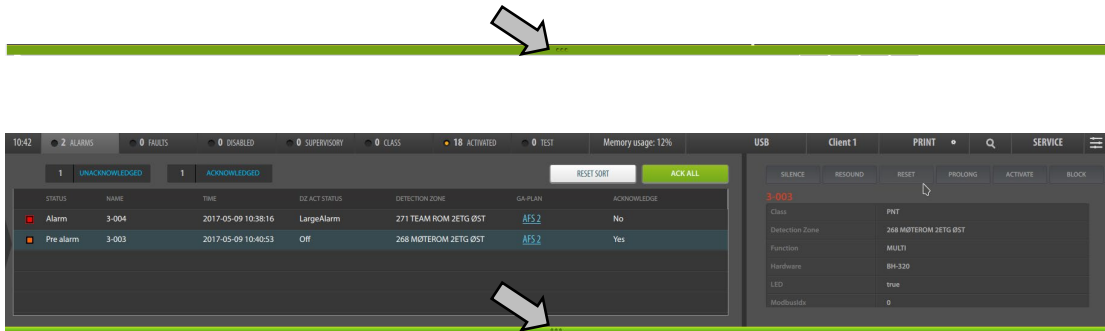
The size of the window will increase automatically (vertically), and the window will show relevant headings where content for the selected topic is listed (if available).

### 3.3 Sorting a List in Ascending/Descending Order

- To toggle between ascending and descending order for a selected list (for example, Name), click the heading

### 3.4 Minimizing or Maximizing the Status Window

- To minimize or maximize the status window, position the cursor and click anywhere inside the green line (or red in the event of an alarm) at the bottom of the Status Window.



It is also possible to click one of the topics in the horizontal status bar (for example, Alarms or Faults) to maximize or minimize.

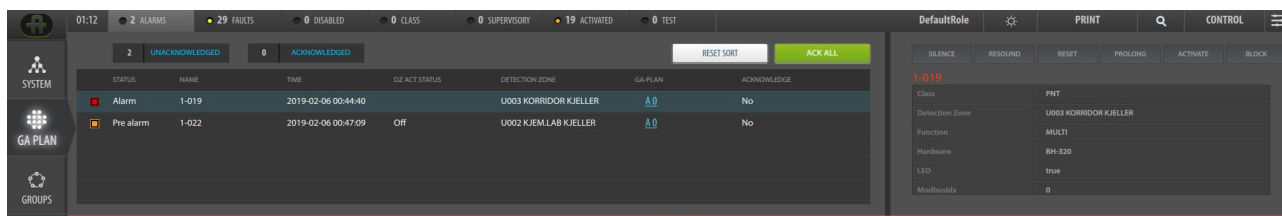


## 3.5 Alarms

- To view a list of all activated fire alarms, click ALARMS in the Status Bar

The number of unacknowledged and acknowledged alarms are shown.

- To acknowledge all alarms that are listed (global silence), click the green ACK ALL button (Control Access Level or higher access levels are required)
- Click the heading of a status (for example “Time”) to toggle between descending and ascending order
- To reset the sort order on the alarms list to the original order, click the white RESET SORT button



The following information is shown:

SYMBOL	STATUS	NAME	TIME	DETECTION ZONE	GA PLAN	ACKNOWLEDGED
An orange symbol	Prealarm	The point's tag name	The time the alarm was initiated	The detection zone the point belongs to	The location (building and floor)	Is the alarm acknowledged? Yes/No
A red symbol	Alarm					

If several alarms are listed, click the alarm in question (in this example, Prealarm is selected). The alarm details for the selected alarm will appear to the right.

The following actions can be performed for the selected alarm and all other alarms belonging to the same fire detection panel (Control Access Level or higher access levels are required):

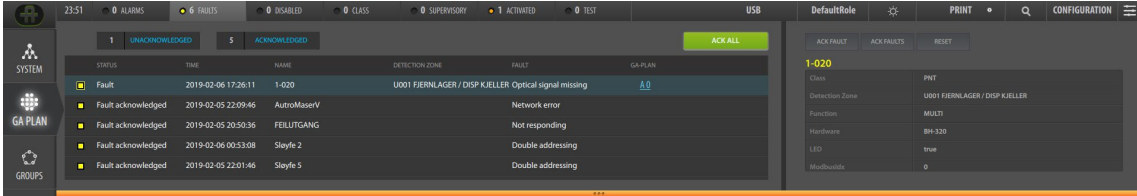
- Silence (SILENCE button)
- Resound (RESOUND button)
- Reset (RESET button)
- Prolong
- Activate
- Block

### 3.6 Faults

- To view a list of all faults, click FAULTS in the Status Bar

The number of unacknowledged and acknowledged faults are shown.

- To acknowledge all faults that are listed, click the green ACK ALL button



The following information is shown:

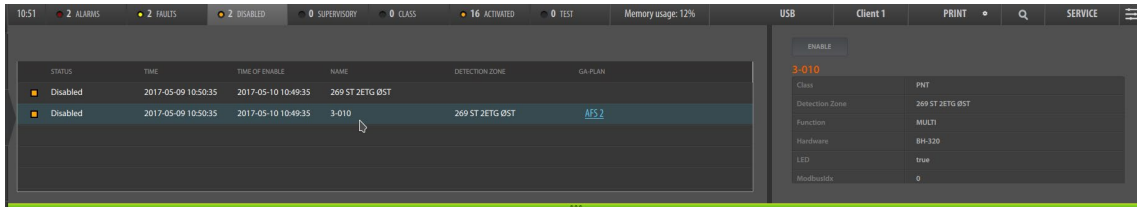
SYMBOL	STATUS	TIME	NAME	DETECTION ZONE	FAULT	GA PLAN
A yellow symbol	Fault	The time the fault occurred	The name of the faulty unit	The detection zone a faulty detector is connected to (applies to detectors only)	Fault description, type of fault	The location (building and floor)

More details for a selected fault are shown in the right hand pane. In addition, the following actions can be performed for the selected fault(s):

- Acknowledge all faults (ACK FAULTS button)
- Reset the panel (RESET button) – all faults will be reset

## 3.7 Disabled

- To view a list of all disablements (detectors, manual callpoints, fire alarm devices, fire protection equipment, etc.) and disabled detection zones, click DISABLE in the Status Bar



The following information is shown:

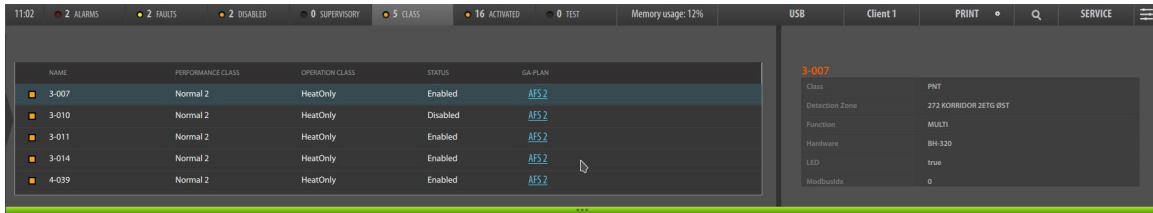
SYMBOL	STATUS	TIME OF ENABLEMENT	NAME	DETECTION ZONE	GA PLAN
A yellow symbol	Disabled	The time when the point is to be enabled	The point's tag name	The detection zone the point belongs to	The location (building and floor)

More details for a selected disabled point are shown in the right hand pane.

In addition, it is possible to enable a disabled unit.

### 3.8 Class

- To view a list of all detectors that temporarily have class settings (Performance Class / Operation Class) different from the class settings in the AutoSafe configuration, click CLASS in the Status Bar



The following information is shown:

NAME	PERFORMANCE CLASS	OPERATION CLASS	STATUS	GA PLAN
The point's tag name	The temporary Performance Class setting	The temporary Operation Class setting	The current state is shown (Enabled or Disabled)	The location (building and floor)

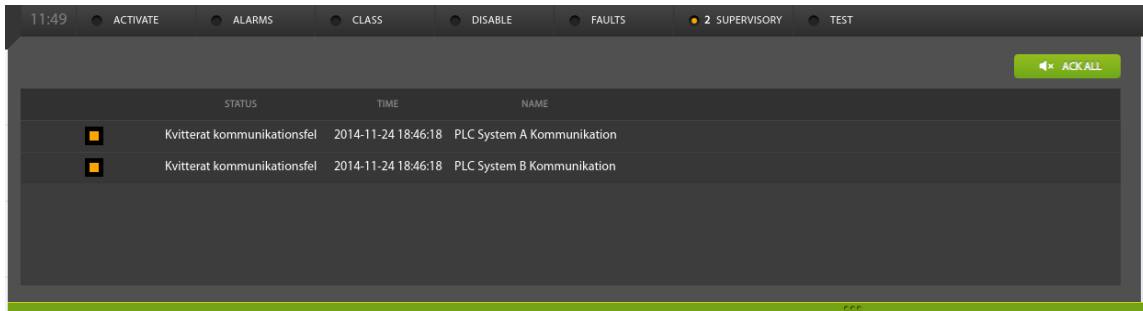
More class change details are shown in the right hand pane.

No actions available.

## 3.9 Supervisory

Applies to Autroprime only.

- To view a list of the status for technical alarms, click SUPERVISORY in the Status Bar



The following information is shown in the left pane:

SYMBOL	STATUS	TIME	NAME	GA PLAN
A yellow symbol	Communication Fault	The time the fault occurred	The name of the technical alarm	The location (building and floor)

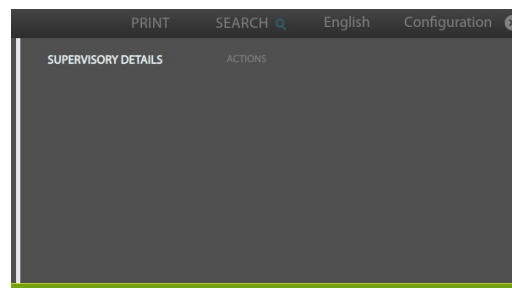
A status can, for example, be information regarding a door that has not been closed within the predefined time due to an obstacle

A reset can be performed after the fault has been corrected.

- To acknowledge all faults, click the green ACK ALL button.

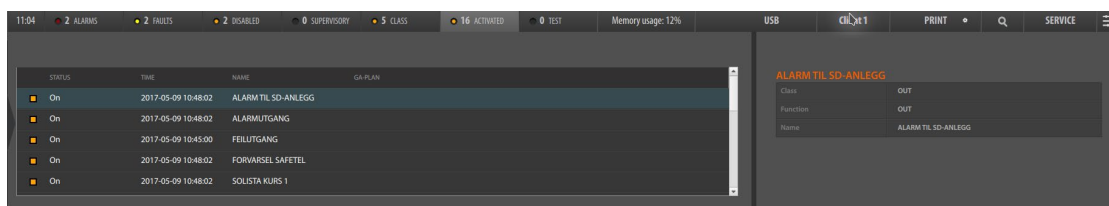
More details for a selected fault are shown in the right hand pane (Supervisory details). In addition, the following actions can be performed for the selected fault(s):

- Acknowledge the selected fault (ACK FAULT button)
- Acknowledge all faults (ACK FAULTS button)
- Reset a selected fault (RESET button)

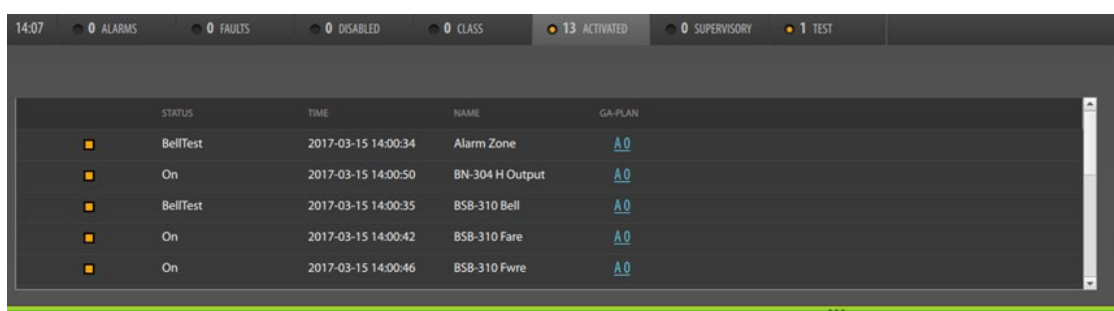


### 3.10 Activated

- To view a list of all activated control outputs (FARE, FAD, FWRE, FPE) and alarm zones, click ACTIVATED in the Status Bar



Also, outputs and fire alarm devices in test mode is shown (status “BellTest”):



The following information is shown in the left pane:

STATUS	TIME	NAME	GA PLAN
The status of the output (ON, Evacuate)	The time the control output was activated	The name of the control output/alarm zone	The location (building and floor)

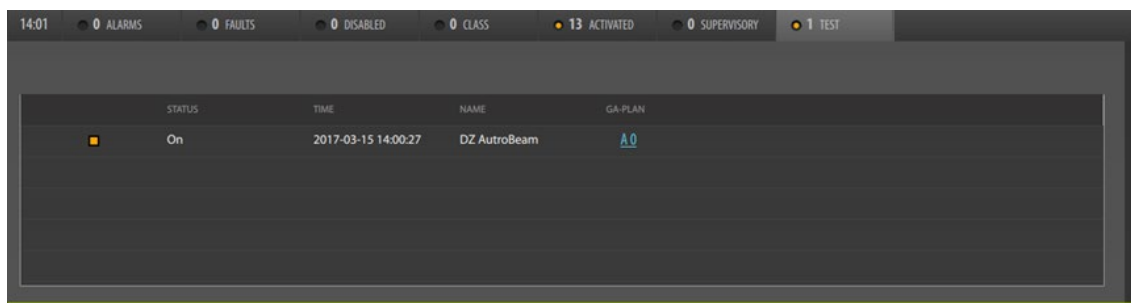
The properties for the activation conditions are shown in the right hand pane. This pane is scrollable using the mouse wheel.

No actions available.

## 3.11 Test

Detection Zones can be set in test mode from an AutoSafe panel (Service menu).

- To view a list of all Detection Zones in test mode, click TEST in the Status Bar



The following information is shown in the left pane:

SYMBOL	STATUS	TIME	NAME	GA PLAN
Orange symbol	ON	The time a Detection Zone was tested	The name of the Detection Zone	The location (building and floor)

More details are shown in the right hand pane. No actions are available.

## 4. In an Alarm Situation

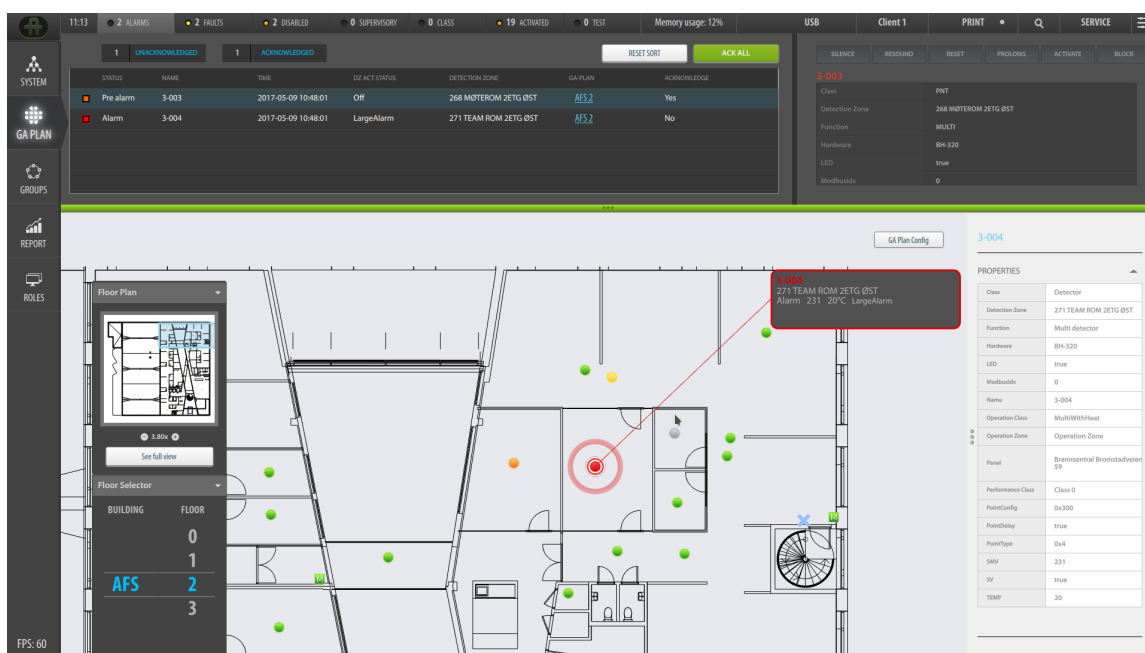
**NOTE: In the event of alarm, always follow local procedures.**

When an alarm, prealarm or fault occurs, AutoMaster will indicate the exact alarm location. Detailed information is provided so that necessary actions can be taken (refer to the description of the different events in *Status Information*, chapter 3 and views/navigation/functions in *GA PLAN*, chapter 2).

Symbols for the different events are in different colors, and color graphics are used for the display of system events (for example, smoke/heat development).

AutoMaster provides also different audio signals (configurable) for the events.

The example below shows an alarm situation. Only one alarm is activated. The point in alarm is indicated by a line linking it to an information box providing point information (see chapter 2.11.1). If several alarms are activated at the same time, the first point in alarm (i.e. activated) will be linked to an information box.






## 5. Global Utility Functions

### 5.1 Introduction



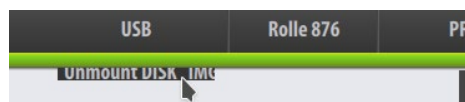
(Screenshot example)

The global utility functions are available for the user, regardless of the view. The functions are located on the right hand side of the uppermost horizontal Status Bar, and include:

- USB (visible only if a USB memory stick is used)
- Role (the name of the role, freely selected)
- Day/Night Mode (switch between day and night mode)
- Print
- Search
- Access Levels (the current Access Level is shown, in the example above Monitoring Access Level is shown)
- Service 

### 5.2 USB

If a USB memory stick is connected to an AutoMaster, “USB” will appear on the status bar. The name of USB disc can vary DISK\_IMG is used in the example below.



- To unmount the USB before removal, click “USB”, then click Unmount DISK\_IMG.

### 5.3 Role

The current Role is shown on the status bar (in this example, “Rolle 876”). A Client Role defines all properties and the layout of a Client, including the type/number of buttons in the left vertical bar and the status views in the horizontal top bar. If several roles exist, it is possible to choose one of them.

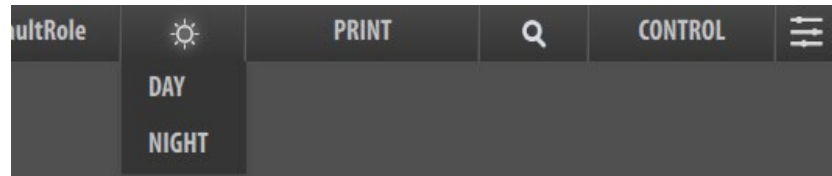


- To select a role, select and click the current Role on the Status Bar, then select among the ones that are available

## 5.4 Day/Night Mode

The Day/Night Mode button allows you to quickly switch between day and night mode in order to provide the best visibility under the current light conditions.

- Click the icon (sun/moon), then select either Day or Night.

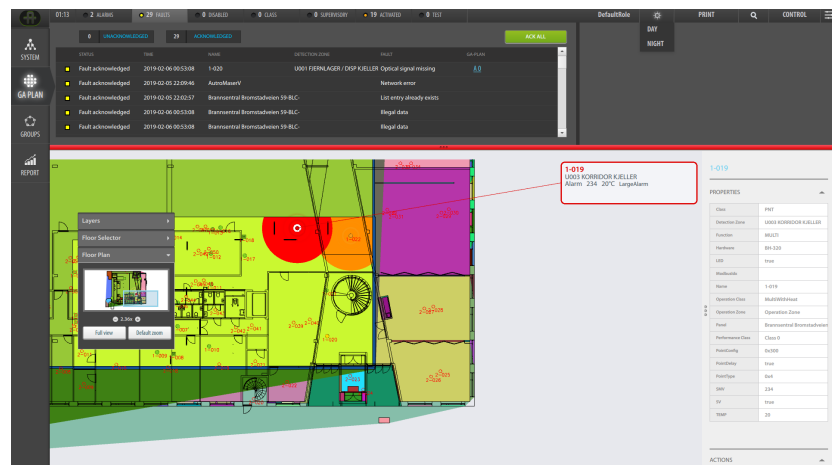


If the current mode is Night Mode, a moon icon is shown.



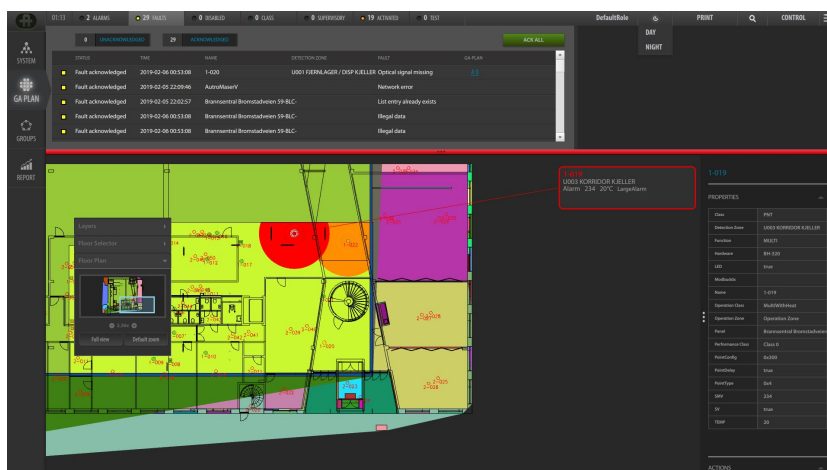
### 5.4.1 Day Mode (example)

In Day Mode, the background is white and the text color is black, providing the best visibility during day time with normal light conditions. A sun icon is shown in the status bar.



## 5.4.2 Night Mode (example)

In Night Mode, the background is black and the text color is white, thus causing better visibility and less strain to the eyes in the dark. A moon icon is shown in the status bar.



## 5.5 Print

### 5.5.1 Overview



In the GA PLAN view, the PRINT menu (a printer symbol) includes the submenu “Screen” which allows you to create a printout or save a pdf file of the current screen (the functions that are currently shown on the screen), for example, a selected report, a floor in the GA PLAN view, etc.

In addition, you can create printable lists related to the status menu you have currently selected (“Alarms” is shown in the example below).

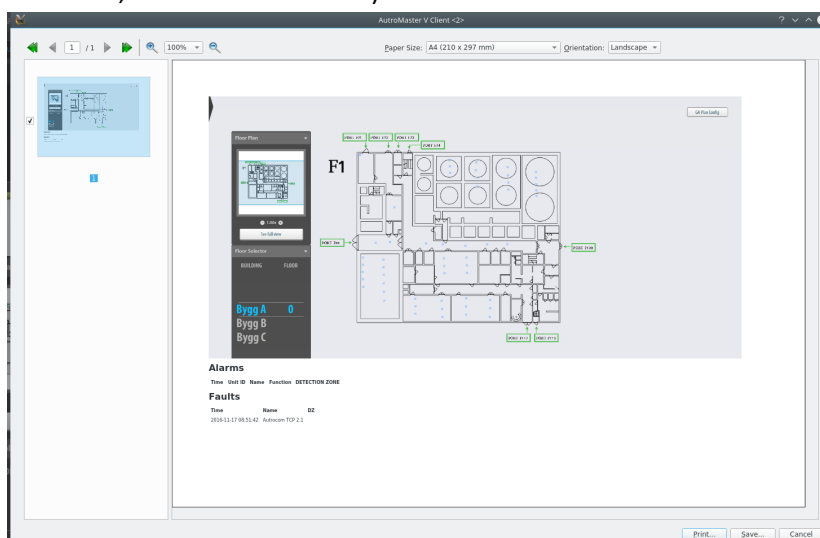




## 5.5.2 Printing/Saving a pdf file



- Click the PRINT button
- Click Screen or the currently available submenu (in the example below, “Alarms” is selected)



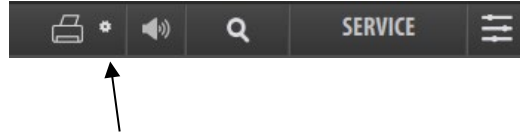
A dialogue box will appear, including a preview of the current screen.

- Select the page (if several pages)
- Define the zoom percentage
- Define the paper size and orientation
- To print the preview, click the Print button in the lower right hand side
- To save the pdf file, click the Save button

### 5.5.3 Printer Settings

#### Requires Service Access Level.

In Service Access Level, a small icon \* is found on the right hand side of the PRINT menu.



- To access the PRINTER SETTINGS dialogue box, click the icon \*.

 A light grey dialogue box titled 'PRINTER SETTINGS'. It contains several settings:
 

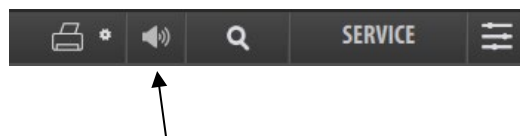
- 'Automatic print:' with a toggle switch set to 'ENABLED'.
- 'Printer name:' with a text input field containing the placeholder text 'Insert printer name'.
- 'Print first alarm not pre alarm:' with a toggle switch set to 'ENABLED'.
- 'Print entire screen on Alarm:' with a toggle switch set to 'ENABLED'.
- 'Send printed alarms to mail:' with a toggle switch set to 'NO'.

- enable or disable automatic print
- type a printer name
- print first alarm not pre alarm (enable or disable)
- print entire screen on Alarm (enable or disable)
- decide to send or not send printed alarms to email (YES/NO)
- To save all settings, click the SAVE button.

### 5.5.4 Local Mute Button

#### Requires Service Access Level.

In Service Access Level, a local mute button is found on the right hand side of the PRINT menu.



- To mute the AutoMaster V, click the local mute button.

## 5.6 Search



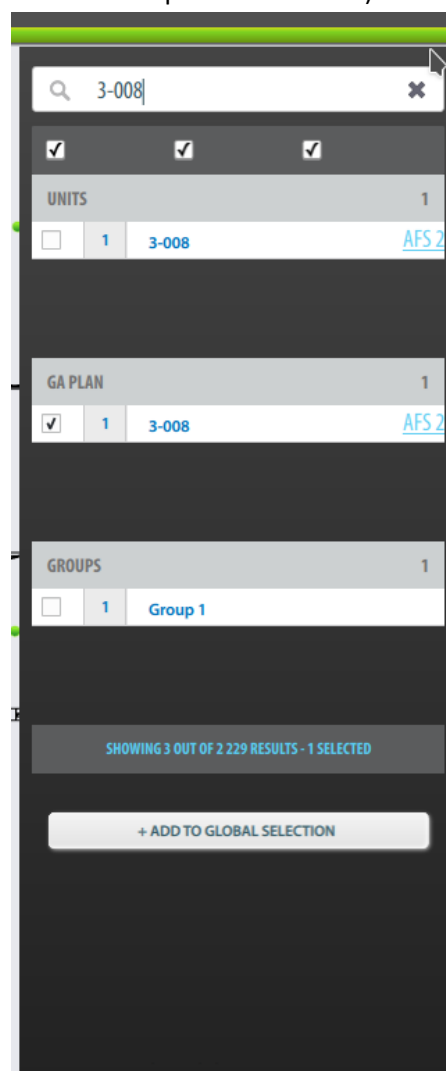
The SEARCH menu includes the following search criteria:

- Units
- GA PLAN
- Groups
- Add to Global Selection

The search functionality allows you to search for units and add them to the Global selection. For example, you can search for detectors, floor plans etc. by entering different search criteria. Depending on the search criteria, the search results may be listed in one or several of the three different categories in the search window; Units, GA PLAN and Groups.

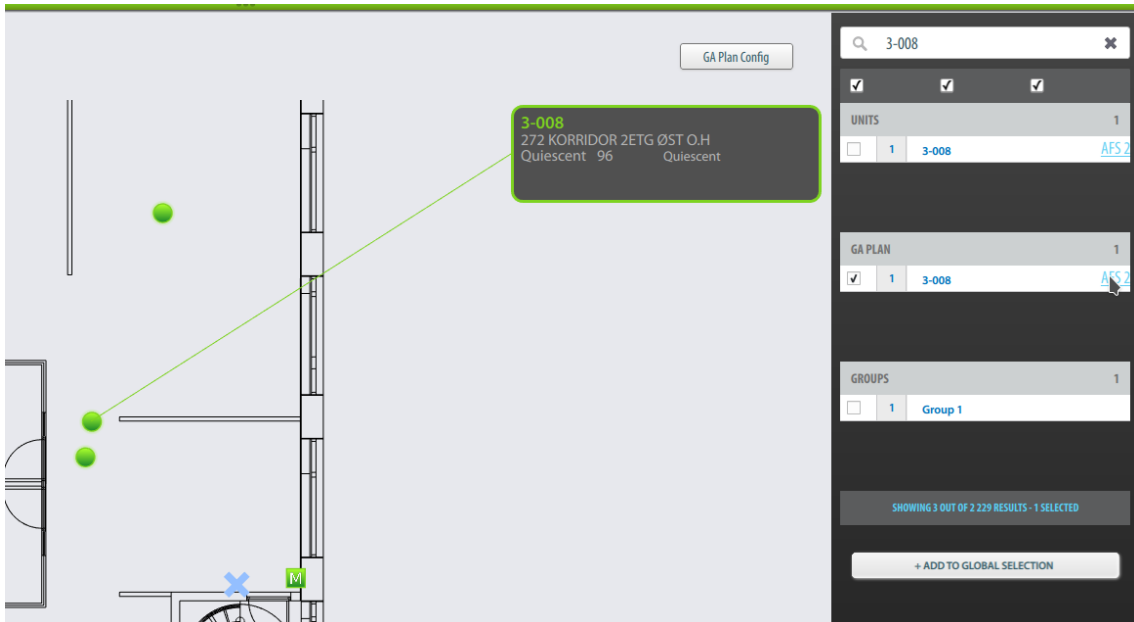
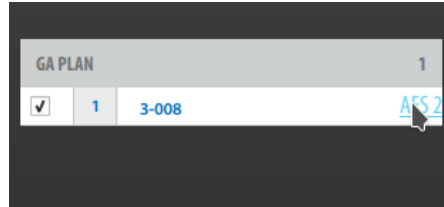
For example, you want to search for a specific detector.

- Click the SEARCH button
- Click the check box(es) for the relevant categories (Units, GA PLAN and/or Groups), then enter, for example, the point's tag name (in this example 3-008 is used)

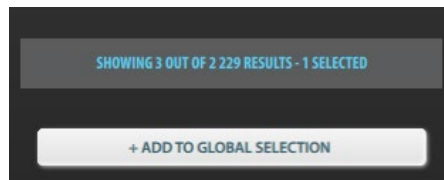


In this example, the search will give search results in all 3 categories. The building and floor are indicated in the UNITS and GA PLAN categories (in this example, AFS2).

If you, for example, click AFS2 in the category “GA plan” the exact point location will be pinpointed in the GA PLAN as shown on next page (provided that the GA plan view is selected, “View GA Plan”).



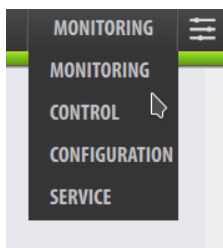
A text box indicates the number of results that are shown on screen, plus the total number of results.



Clicking the UNITS box will provide a DISABLE and ENABLE button allowing you to disable/enable the selected point.



## 5.7 Access Levels



AutoMaster provides the following four different Access Levels, located on the right hand side of the uppermost horizontal Status Bar.

- Monitoring Access level
- Control Access Level
- Configuration Access Level (password required)
- Service Access Level (password required)

A description of the different Access Levels are listed in the table below.

Access Level	Comment	Description
1	Monitoring	Observation only (read only). <ul style="list-style-type: none"> <li>• licence administration (software licence key)</li> <li>• select points</li> <li>• change drawings</li> <li>• turn ON/OFF layers</li> <li>• generate and printout all reports</li> <li>• view Groups</li> </ul>
2	Control	Operation; permission to operate everything that affects/changes the status of the Fire Detection System. <ul style="list-style-type: none"> <li>• reset alarm sounders</li> <li>• reset the system</li> <li>• acknowledge alarms/faults</li> <li>• resound</li> <li>• disable/enable single points</li> <li>• create/change/delete groups</li> <li>• activate/deactivate groups</li> <li>• activate/deactivate panels/systems</li> </ul>
3	Configuration	All configuration. Password required. <ul style="list-style-type: none"> <li>• add/delete/change drawings</li> <li>• configure client roles</li> <li>• add/delete Excel files</li> <li>• add/delete AutoSafe configuration files and other files</li> <li>• add/delete Main View buttons / status views</li> </ul>
4	Service	Access to command-line functions, including password changes. Password required. <ul style="list-style-type: none"> <li>• Loading Master configuration</li> <li>• Generating Master configuration</li> </ul>

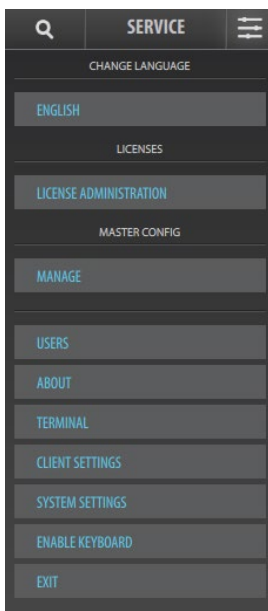
When selecting a higher Access Level, the password dialogue appears prompting the user to enter a password.

- Type the password, then click OK to confirm

## 5.8 Service Menu



### 5.8.1 Overview



The service menu is located rightmost on the horizontal Status Bar, and includes the following submenus:

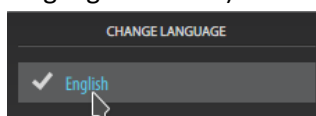
- Change Language (requires Service Access Level)
- License Administration
- Manage (requires Service Access Level)
- Users (requires Configuration Access Level)
- About
- Terminal
- Client Settings
- System Settings
- Enable (/Disable) Keyboard
- Exit (requires Configuration Access Level)

If a submenu requires a higher access level than the one you currently use or are granted, the required access level is shown when the submenu is highlighted.

### 5.8.2 Change Language

#### Requires Service Access Level.

- From the SERVICE menu, click the Language button (the current language is shown)

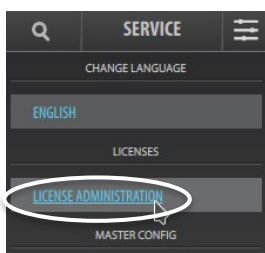


If several languages are available and uploaded to the AutoMaster (Excel file), it is possible to select one of the available languages.

- Click the the desired language

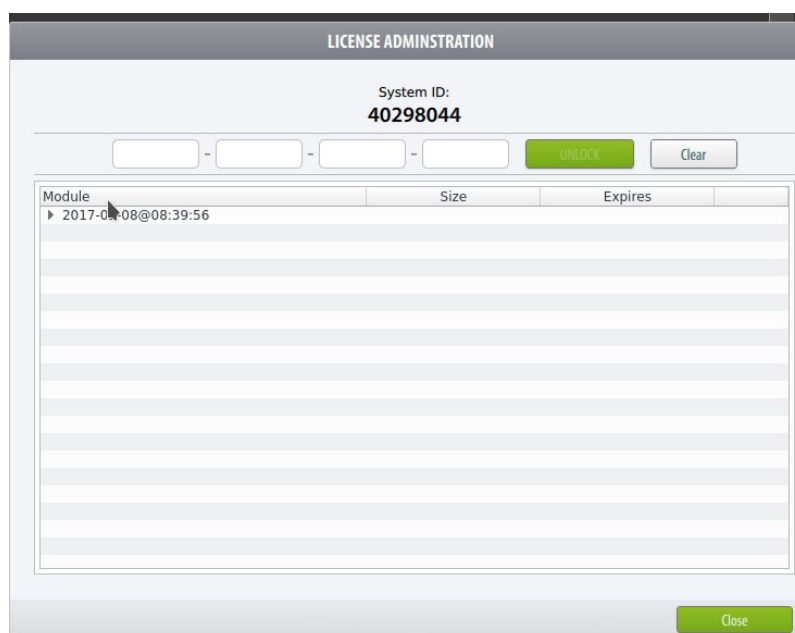
All language-dependent menus and text strings will automatically change to the selected language.

### 5.8.3 License Administration



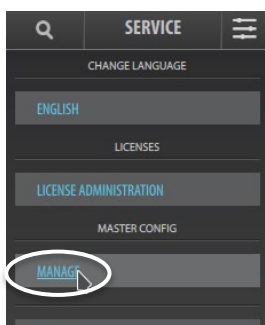
AutoMaster V is delivered with a software license key, consisting of a series of numbers and/or letters. This software license key certifies that the copy of the software is original, and is required in order to use the system.

- From the SERVICE menu, click License Administration



- Verify the System ID
- Enter the license key
- Click the UNLOCK button
- Click the Close button

### 5.8.4 Managing the Master Configuration



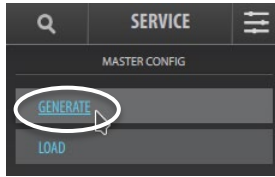
The Master Configuration menu provides the following submenus:

- MANAGE, allowing you to generate and upload a Master Configuration (requires Service Access Level)
- USERS, allowing you to add/remove users

Refer to Installation, Configuration and Commissioning Handbook for AutoMaster V, 116-AMASTERV-INSTCONFCOM/IGB.

### 5.8.4.1 Generate Master Configuration

**Requires Service Access Level.**

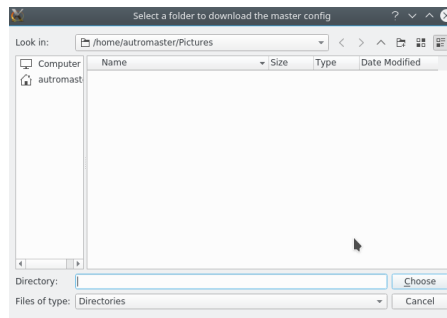


- From the SERVICE menu, click MANAGE
- Click GENERATE

A dialogue box will appear.

 A dialog box titled 'GENERATE MASTER CONFIG'. It contains several input fields: 'INSERT USER NAME', 'INSERT VERSION NUMBER', 'YOUR COMMENTS', 'MASTER CONFIG PATH' (with a 'Browse' button next to it), and 'INSERT MASTER CONFIG NAME'. At the bottom, there are 'Cancel' and 'Generate' buttons.

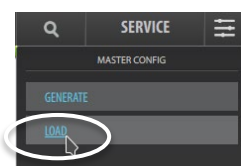
- Insert the User Name
- Insert the Version Number
- If necessary, insert your comments
- Browse to select a folder to download the Master Configuration



- Insert the Master Configuration Name
- Click the Generate button

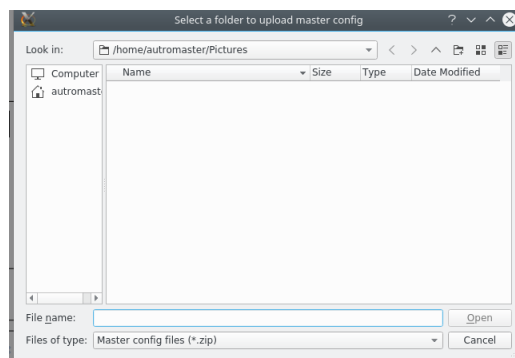
The Master Configuration will be downloaded to the selected folder. Refer to Installation, Configuration and Commissioning Handbook for AutoMaster V, 116-AMASTERV-INSTCONFCOM/IGB.

## 5.8.4.2 Upload Master Configuration



### Requires Service Access Level.

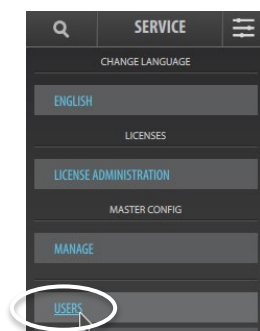
- From the SERVICE menu, click MANAGE
- Click LOAD and navigate to find the location of the Master Configuration



- Select the Master Configuration file, then click Open

Refer to Installation, Configuration and Commissioning Handbook for AutoMaster V, 116-AMASTERV-INSTCONFCOM/IGB.

## 5.8.5 Users



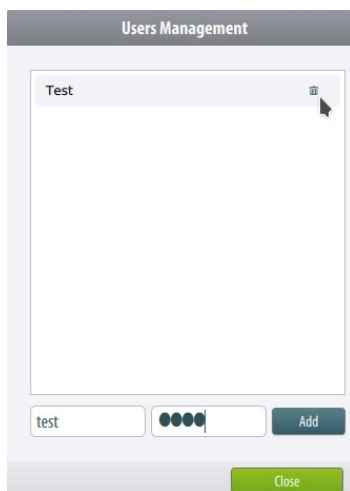
### Requires Configuration Access Level.

Users can be administrated in the Users Management dialogue box.

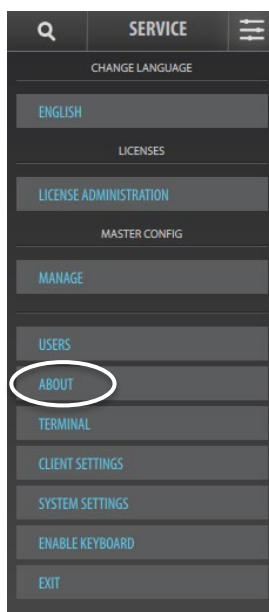
- From the SERVICE menu, click USERS
- To add a user,
  - add a User Name in the LOGIN field
  - add a freely chosen Password in the Password field
  - click the Add button, then click the Close button



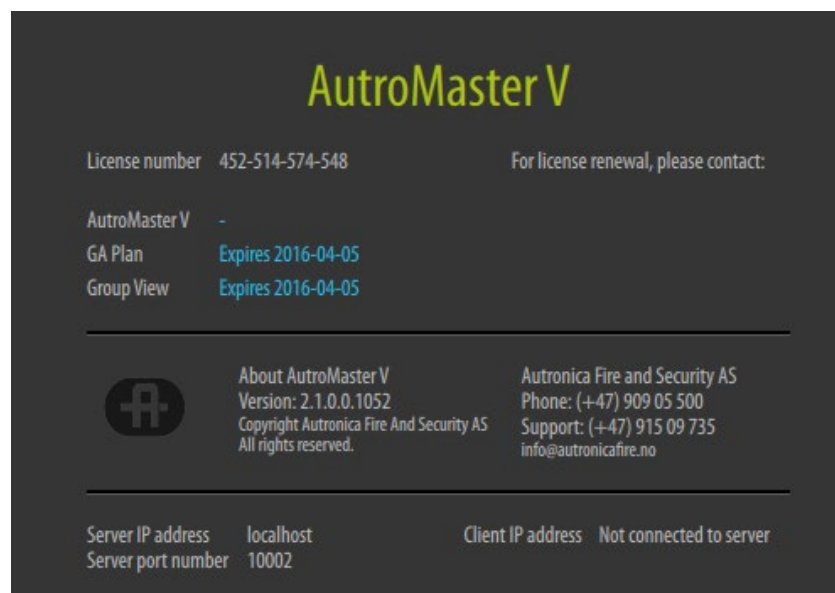
- To remove a user,
  - select and highlight the user in question
  - click the thrash icon to the right on the highlighted user
  - click Yes if you are sure you want to remove the user, then click the Close button



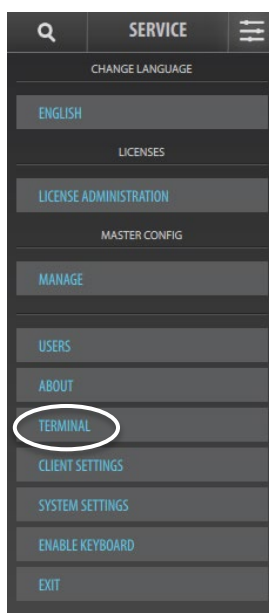
## 5.8.6 About



About provides essential information about the AutoMaster version, license number, etc.

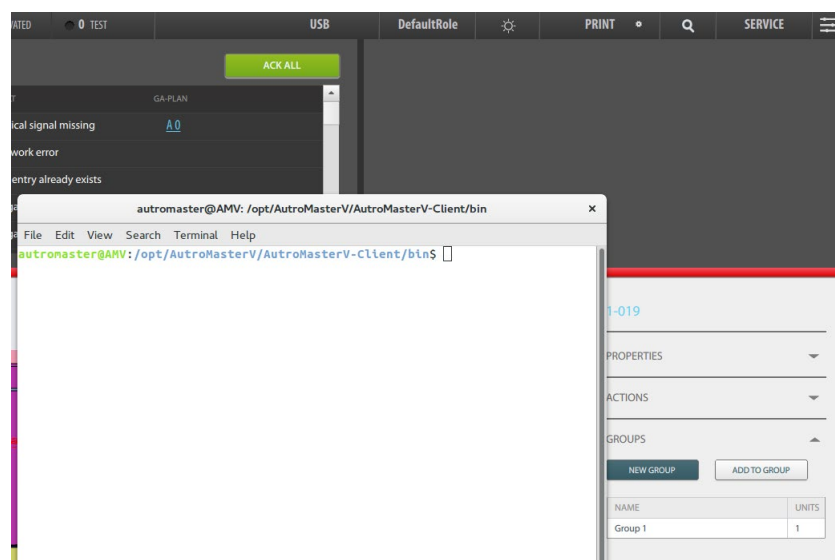


## 5.8.7 Terminal

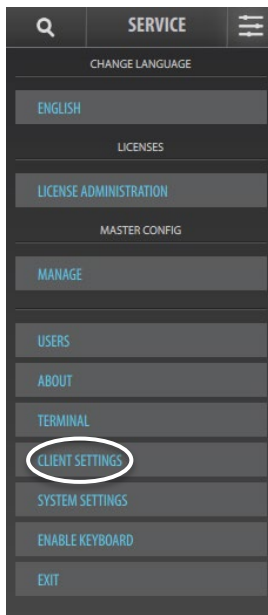


**Requires Service Access Level.**

Clicking the Terminal button gives direct access to the terminal console window.

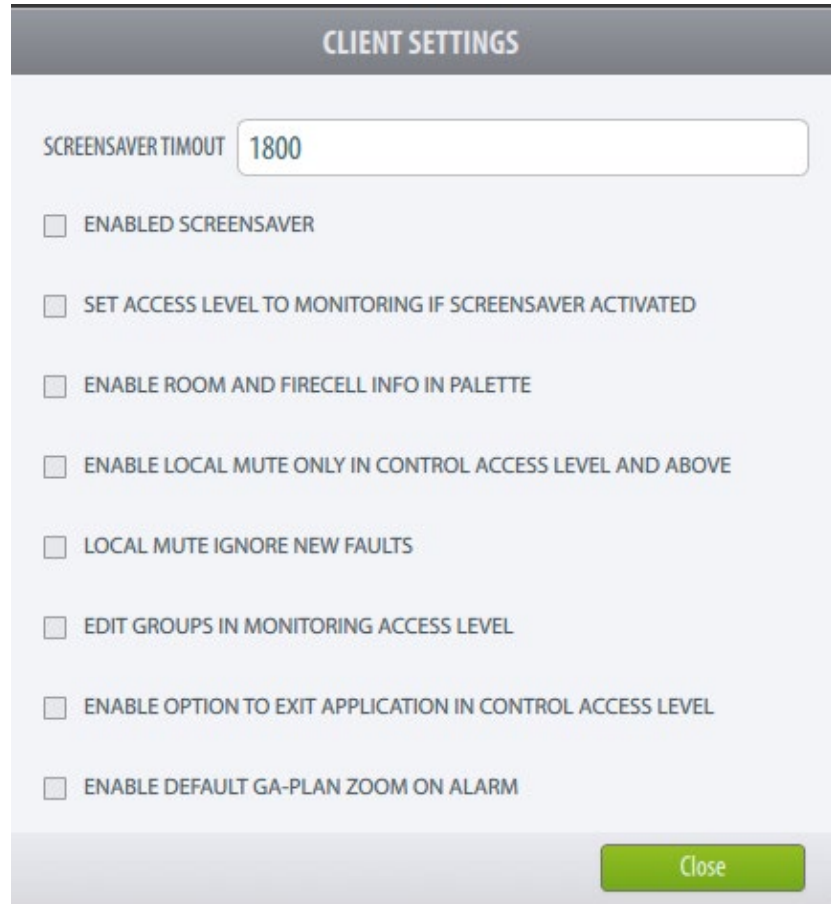


## 5.8.8 Client Settings



### Requires Service Access Level.

- From the SERVICE menu, click Client Settings



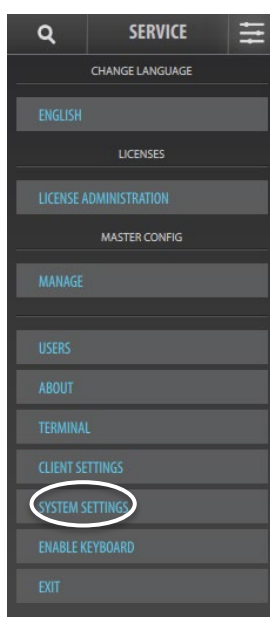
The following settings are available (default: all settings are turned off):

- Enter the screensaver timeout  
(by default the timer is set to 1800 seconds before the screen saver is enabled)
- Enable screensaver  
(turns on/off screen saver)
- Set access level to “Monitoring” if the screensaver is activated  
(when the screen saver is active the access level is set to “Monitoring”)
- Enable room and firecell information in palette  
(enables room and firecell info in palette when selecting a detector)
- Enable local mute only in “Control” access level and above  
(hides local mute in “Monitoring” access level)
- Local mute ignores new faults  
(do not disable local mute if a new fault is received, on alarm the local mute will always be disabled)



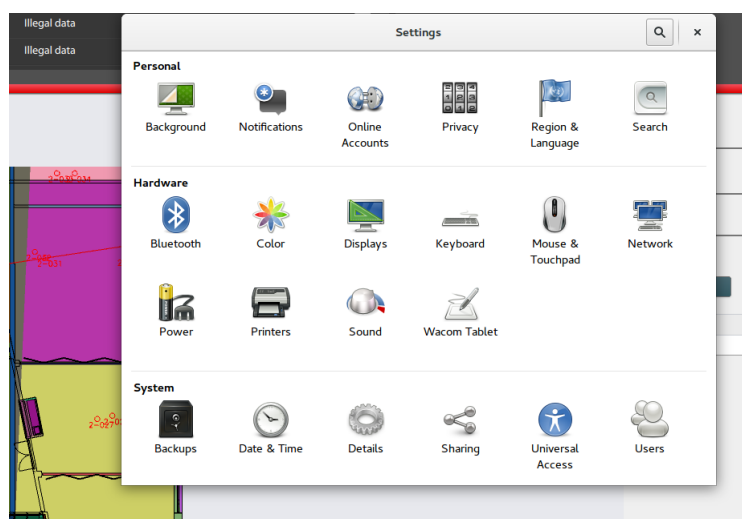
- Edit groups in monitoring access level  
Add and delete groups and group members in Monitoring level, but no group activation.
- Enable option to exit application in control access level  
Gives the option to exit the AutoMaster V client in access level control
- Enable default GA-plan zoom on alarm  
Set a default zoom on GA-plan floor drawing before presenting alarm can be useful when printing alarm.
- Click Close to exit

### 5.8.9 System Settings



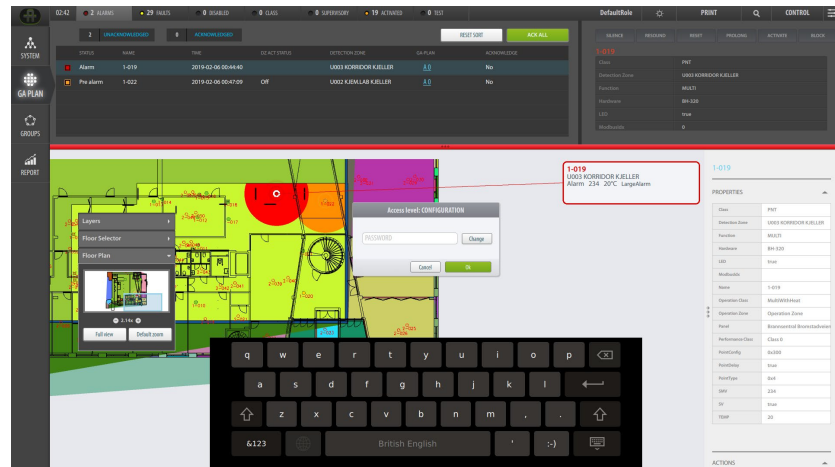
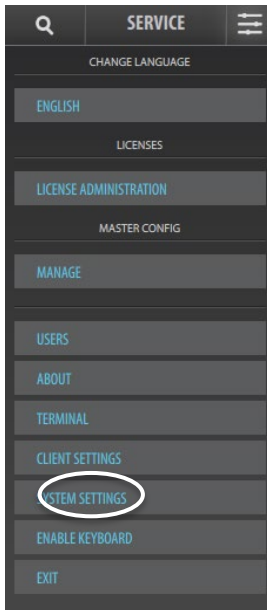
#### Requires Service Access Level

Clicking System Setting button gives you direct access to the System Settings menu.

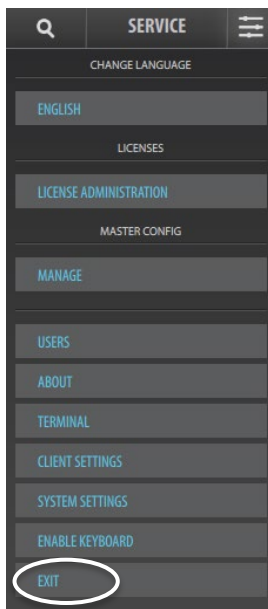


### 5.8.10 Enable (/Disable) Keyboard

In case there is no physical keyboard connected to your AutoMaster, a virtual keyboard can be used. When the keyboard is enabled in this menu (Enable Keyboard), a virtual keyboard will appear automatically on the screen whenever a text field/dialogue box appears and the cursor is blinking (for example, when you click the Search button). To turn off the keyboard functionality, click Disable Keyboard.



### 5.8.11 Exit



#### Requires Configuration Access Level.

Exit allows you to exit the system. If you click Exit, you will be prompted to acknowledge exit (OK/Cancel). Acknowledging exit will erase current auto-login settings.

---

# 6. Group Management

---

## 6.1 Introduction

In the GROUPS View, it is possible to create groups with specific properties.

### Example 1

If the operator's work instructions are, for example, to temporarily set all 4 detectors in a specific area to Performance Class "Industrial", all 4 detectors can be added to a group with this setting (Group Property). When this group is activated, all 4 detectors will have Performance Class "Industrial" until the group is deactivated (regardless of the settings in the AutoSafe Configuration).

### Example 2

Likewise, if the operator's work instructions are, for example, to temporarily disable 10 detectors in a specific area, all 10 detectors can be added to a group where all group members in the group are disabled (checkbox). When the group is activated, all 10 detectors will be disabled until the group is deactivated (regardless of whether some of the detectors already have been disabled by operating the fire alarm control panel).

Group management comprises the following:

- add/remove selected points, I/O units (FPE) and alarm devices (FAD) to/from a group
- set the Operation Class (MultiSensors only) or Performance Class for detectors belonging to a group
- disable/enable group members belonging to a group
- modify the settings of a group
- delete a group

## 6.2 Opening the GROUPS View

- Click the GROUPS button on the left vertical bar

Settings for  
Performance Class /  
Operation Class

Groups (list)

GROUPS

GROUP NAME	STATUS	TIMER
Group 1	Idle	Manual Manual
Group 2	Idle	Manual Manual
Group 3	Idle	Manual Manual

Group 1

PROPERTIES

ARM: No value

PERFORMANCE CLASS OPTICAL DETECTORS: No value

PERFORMANCE CLASS HEAT DETECTORS: No value

PERFORMANCE CLASS MULTISENSORS: No value

PERFORMANCE CLASS FLAME DETECTORS: No value

OPERATION CLASS MULTISENSORS: No value

GROUP ACTIVATION TIMER

ACTIVATE: Manual

DEACTIVATE: Manual

REPEAT: No Repeat

RESPONSIBLE

IDLE

GROUP MEMBERS

NAME	TYPE	ARM	SMV	PERFORMANCE CLASS	OPERATION CLASS	PANEL	DETEC
1-016	MULTI	Enabled	118		MultiWebHeat	U004 KORRIDOR KJELL...	Branns
1-017	MULTI	Enabled	118		MultiWebHeat	U006 TRAPP 1 KJELLER	Branns
1-019	MULTI	Enabled	234		MultiWebHeat	U003 KORRIDOR KJELL...	Branns
1-020	MULTI	Enabled	0		MultiWebHeat	U001 FEBNLAGER / D...	Branns
1-021	MULTI	Enabled	118		MultiWebHeat	U001 FEBNLAGER / D...	Branns
1-022	MULTI	Enabled	188		MultiWebHeat	U002 KJEMLAB KJELL...	Branns
1-025	MULTI	Enabled	118		MultiWebHeat	U018 TEKNIROM KJELL...	Branns
1-026	MULTI	Enabled	118		MultiWebHeat	U018 TEKNIROM KJELL...	Branns
1-027	MULTI	Enabled	118		MultiWebHeat	U018 TEKNIROM KJELL...	Branns
1-028	MULTI	Enabled	118		MultiWebHeat	U018 TEKNIROM KJELL...	Branns
2-002	MULTI	Enabled	118		MultiWebHeat	105 CSC (2)	Branns
2-004	MULTI	Enabled	118		MultiWebHeat	127 KORRIDOR	Branns
2-032	OPT	Enabled	96	Normal 1		137 MØTTE / UNERV. O.H	Branns

Units

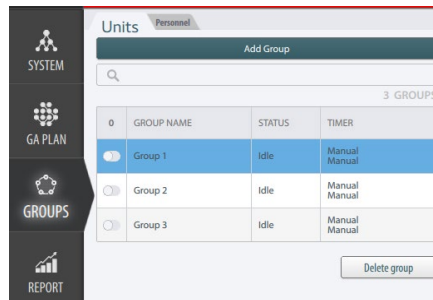
NAME	TYPE	PANEL	DETECTION ZONE	OPERATIO
1-004	MULTI	Brannsentr...	U015 TENNSROM V...	
1-003	MULTI	Brannsentr...	U015 TENNSROM V...	
1-004	MULTI	Brannsentr...	U014 LAGER (TØRS)	
1-005	MULTI	Brannsentr...	U014 LAGER (TØRS)	
1-006	MULTI	Brannsentr...	U004 KORRIDOR KJELL...	
1-007	OPT	Brannsentr...	U004 KORRIDOR O.H...	
1-009	MULTI	Brannsentr...	U013 TRAPP 2 KJELLER	
1-010	MULTI	Brannsentr...	U011 GARDEROBE K.J.	
1-011	MULTI	Brannsentr...	U007 GARDEROBE K.J.	
1-012	MULTI	Brannsentr...	U005 RENHOLD KJELL...	
1-013	OPT	Brannsentr...	U004 KORRIDOR O.H...	
1-014	MULTI	Brannsentr...	U004 KORRIDOR O.H...	
1-015	OPT	Brannsentr...	U004 KORRIDOR O.H...	
1-016	MULTI	Brannsentr...	U004 KORRIDOR KJELL...	
1-017	MULTI	Brannsentr...	U006 TRAPP 1 KJELLER	
1-019	MULTI	Brannsentr...	U003 KORRIDOR KJELL...	
1-020	MULTI	Brannsentr...	U001 FEBNLAGER / D...	
1-021	MULTI	Brannsentr...	U001 FEBNLAGER / D...	
1-022	MULTI	Brannsentr...	U002 KJEMLAB KJELL...	
1-025	MULTI	Brannsentr...	U018 TEKNIROM KJELL...	
1-026	MULTI	Brannsentr...	U018 TEKNIROM KJELL...	
1-027	MULTI	Brannsentr...	U018 TEKNIROM KJELL...	
1-028	MULTI	Brannsentr...	U018 TEKNIROM KJELL...	
2-002	MULTI	Brannsentr...	105 CSC (2)	
2-003	OPT	Brannsentr...	127 KORRIDOR O.H...	
2-004	MULTI	Brannsentr...	127 KORRIDOR	
2-005	MULTI	Brannsentr...	125 ELVALEROM	
2-006	MULTI	Brannsentr...	147 LAGER	
2-007	MULTI	Brannsentr...	102 TF JVDL	
2-008	MULTI	Brannsentr...	104 DRIFT / ADMA	
2-009	MULTI	Brannsentr...	103 KONTOR	
2-010	MULTI	Brannsentr...	106A SERVICE(9)	
2-011	MULTI	Brannsentr...	146 STILLEROM	

List of all units

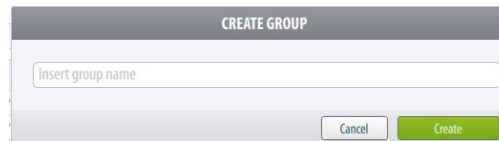
Group members

## 6.3 Adding a Group

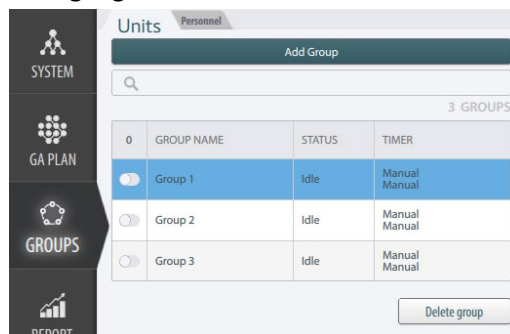
- Click the Add Group button



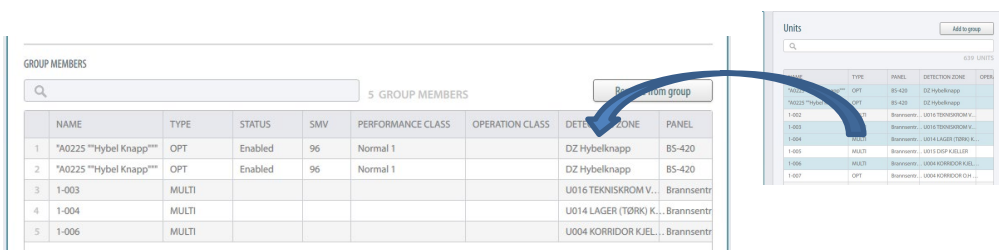
- Type the group name, then click the CREATE button



- Select the group (click the uppermost left row and the row will be highlighted)



- Select the units that are to be added from the Units list window (on the right hand side) to the selected group one by one, or use the Ctrl key or Shift key to multiselect units
- Click the Add to Group button, or while holding the Ctrl or Shift key, drag and drop the units in the Group members window



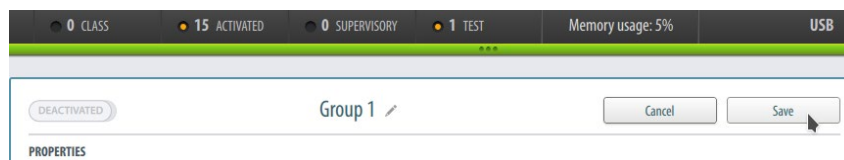
- If you want to search for specific units, the name of the unit(s) can be entered in the Search field, and only units including the search criteria will be listed

The selected units are added to the group and are shown in the Group Members window.

GROUP MEMBERS								
Q						5 GROUP MEMBERS		Remove from group
	NAME	TYPE	STATUS	SMV	PERFORMANCE CLASS	OPERATION CLASS	DETECTION ZONE	PANEL
1	"A0225 ""Hybel Knapp""	OPT	Enabled	96	Normal 1		DZ Hybelknapp	BS-420
2	"A0225 ""Hybel Knapp""	OPT	Enabled	96	Normal 1		DZ Hybelknapp	BS-420
3	1-003	MULTI					U016 TEKNISKROM V...	Brannsentr
4	1-004	MULTI					U014 LAGER (TØRK) K...	Brannsentr
5	1-006	MULTI					U004 KORRIDOR KJEL...	Brannsentr

The Group Properties for this group can now be defined. For information on the various settings for a group, see the following chapters.

- When all group members are added, click the SAVE button



- Continue setting the Performance/Operation Class for detectors belonging to this group, as described on the following pages

## 6.4 Setting Performance/Operation Class for Detectors in a Group

In the Group Property Pane, the Operation Class (MultiSensors only) and Performance Class can be set for units belonging to a selected group. The class settings that are set will take effect when the group is activated and will apply until this group is deactivated.

Note: Autroprime does not support manual class setting from AutoMaster V.

- Select the group (click the row for a selected group and the row will be highlighted)

0	GROUP NAME	STATUS	TIMER
<input checked="" type="radio"/>	Group 1	Idle	Manual Manual
<input type="radio"/>	Group 2	Idle	Manual Manual
<input type="radio"/>	Group 3	Idle	Manual Manual

- To set the Performance Class for all optical detectors belonging to this group, click the dropdown box for the units in question, then scroll to select the setting

Note that “No Value” indicates that the group property is not configured and will have no effect on the group members when the group is activated.

- To set the Performance Class for all heat detectors belonging to this group, click the dropdown box for the units in question, then scroll to select the Performance Class, for example Grade 1

PROPERTIES

ARM	No value
PERFORMANCE CLASS OPTICAL DETECTORS	No value
PERFORMANCE CLASS HEAT DETECTORS	No value
PERFORMANCE CLASS MULTISENSORS	No value
OPERATION CLASS MULTISENSORS	Grade 1 Grade 2 Grade 3
RESPONSIBLE	A1 A1R A25 B C
HARMLESS	Activated, but no group properties have been assigned to the group

- To set the Performance Class for all MultiSensors belonging to this group, click the dropdown box for the units in question, then scroll to select the Performance Class, for example Normal 2

DEACTIVATED Group 1

PROPERTIES

ARM	No value
PERFORMANCE CLASS OPTICAL DETECTORS	Normal 1
PERFORMANCE CLASS HEAT DETECTORS	Grade 1
PERFORMANCE CLASS MULTISENSORS	Normal 1
OPERATION CLASS MULTISENSORS	No value Clean Normal 1
RESPONSIBLE	Normal 2 Industrial

- To set the Operation Class for all MultiSensors belonging to this group, click the dropdown box for the units in question, then scroll to select the Operation Class, for example MultitOnly

DEACTIVATED Group 1

PROPERTIES

ARM	No value
PERFORMANCE CLASS OPTICAL DETECTORS	Normal 1
PERFORMANCE CLASS HEAT DETECTORS	Grade 1
PERFORMANCE CLASS MULTISENSORS	Normal 1
OPERATION CLASS MULTISENSORS	MultitOnly
RESPONSIBLE	No value MultitOnly HeatOnly MultitWithHeat

- When you have completed the setting, click the Save button to the right

0 CLASS 15 ACTIVATED 0 SUPERVISORY 1 TEST Memory usage: 5% USB

DEACTIVATED Group 1

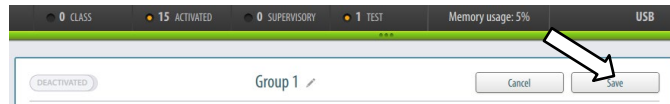
Cancel Save



## 6.5 Saving the Properties for a Group

Whenever changes are done in the properties for a group, the group must be saved.

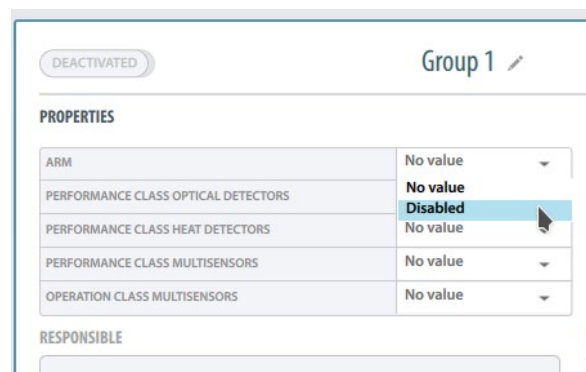
- Click the Save button to the right



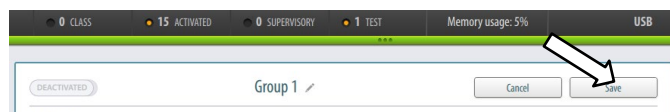
## 6.6 Disabling Group Members

The group members belonging to a Group can be set to Disabled. This setting can be done only when the group in question is deactivated.

- Select the group (click the row for a selected group and the row will be highlighted)
- Click the dropdown box for ARM, and select Disabled



- When you have completed the setting, click the Save button to the right



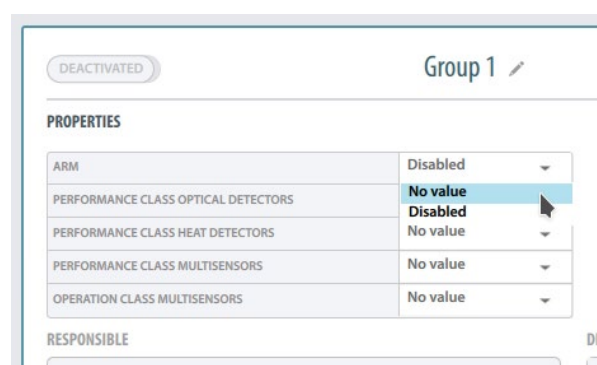
The disablement will take effect when the group is activated (see chapter 6.8) and will apply until this group is deactivated.

- To temporarily disable group members belonging to this group, activate the group (click DEACTIVATED and the background of the button will turn green and the status text will change to ACTIVATED)

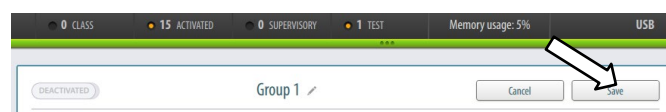
## 6.7 Enabling Group Members

The group members belonging to a Group that are set to Disabled can be set to enabled (default). This setting can be done only when the group in question is deactivated.

- Select the group (click the row for a selected group and the row will be highlighted)
- Click the dropdown box for ARM, and select No Value (“No Value” indicates that the group property is not configured and will have no effect on the group members when the group is activated)



- When you have completed the setting, click the Save button to the right



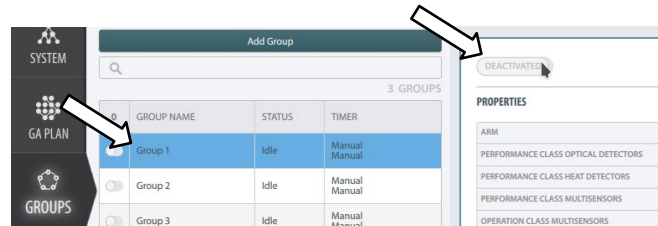
The group members will not be disabled if the group in question is activated.

## 6.8 Activating/Deactivating a Group

### 6.8.1 Activating a Group

To temporarily activate a group, do the following:

- In the leftmost window, click either of the buttons (for the group that is highlighted, in this example Group 1)

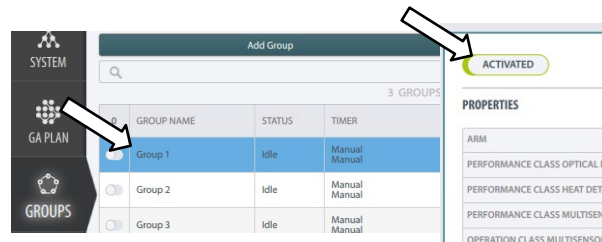


The background of the buttons will turn green, and the status text DEACTIVATED on the rightmost button will change to ACTIVATED when the group is activated (see next chapter).

The group properties that are set for this group will apply until the Group is deactivated.

### 6.8.2 Deactivating a Groups

- To deactivate the group, click either of the buttons



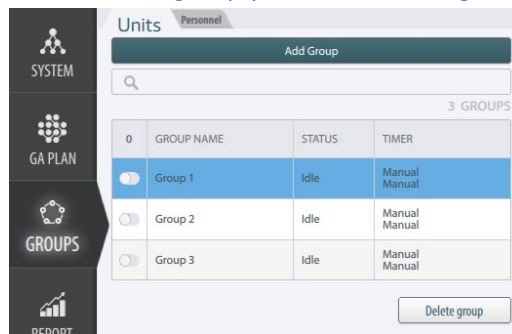
The background of the buttons will turn light grey, and the status text ACTIVATED on the rightmost button will change to DEACTIVATED when the group is activated.

## 6.9 Group Activation/Deactivation Timer

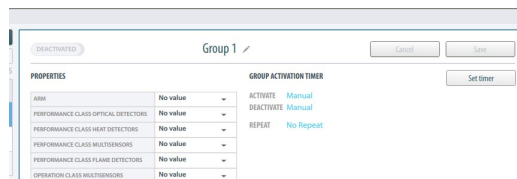
Instead of activating or deactivating groups manually, the Group Activation Timer allows you to set the exact date and time when you want the system to automatically activate a certain group (that is currently deactivated) or automatically deactivate a group that is currently activated. The deactivation of a group can also be done manually.

The automatic activation or deactivation of a group can be repeated in predefined intervals, and the repetitions can be ended automatically at a predefined date and time.

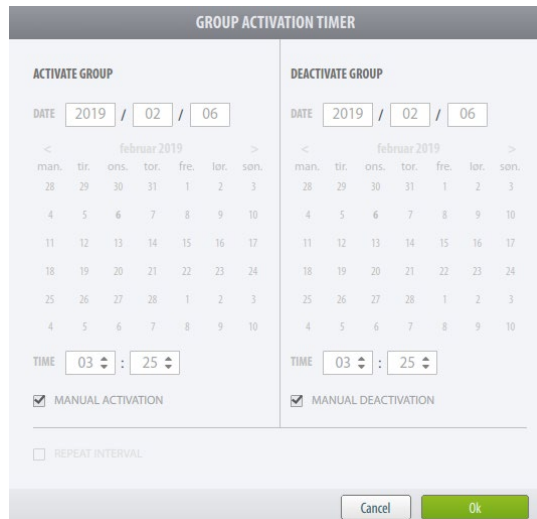
- Select the group you want to configure



- Click the Set timer button



- The Group Activation Timer window will appear, showing Activate Group on the left side, and Deactivate Group on the right hand side



- Remove the check mark from the Manual Activation box for Activate Group

- If you want the system to deactivate the group automatically, also remove the check mark from the Manual Activation box for Deactivate Group

The screenshot shows the 'GROUP ACTIVATION TIMER' configuration window. It is divided into two main sections: 'ACTIVATE GROUP' and 'DEACTIVATE GROUP'.  
- **ACTIVATE GROUP:** DATE: 2019 / 02 / 23; TIME: 18 : 15.  
- **DEACTIVATE GROUP:** TIME: 21 : 15.  
- **REPEAT INTERVAL:** A checked box labeled 'REPEAT INTERVAL'. Below it, 'REPEAT' is set to 'Weekly' and 'REPEAT EVERY' is set to '2' WEEKS.  
- **Days of the Week:** A row of checkboxes for MON, TUE, WED, THU, FRI, SAT, SUN. MON, TUE, and WED are checked.  
- **END REPETITION:** DATE: 2019 / 04 / 30; TIME: 10 : 30. There is an unchecked checkbox labeled 'MANUAL'.  
- **SUMMARY:** Repeat every 2 weeks on Monday, Tuesday, Wednesday between 18:15 and 21:15.  
- **Buttons:** 'Cancel' and 'Ok' buttons are at the bottom right.

- Set the date and time for automatic activation and deactivation
- Check off the Repeat Interval box, then set the repeat interval (daily, weekly, monthly) and how often it is to be repeated (for example, every week, every 2 weeks, etc.)
- Set the date and time when the repetition is to be ended
- Click OK to save the configuration

See example on next page.

**Example**

In this example, the group in question is set to manual activation and manual deactivation. To enable automatic activation and deactivation, the configuration for the group is changed as follows, using the Group Activation Timer (see screenshot below):

- The system is configured to automatically activate the group 23 January 2019 at 18:15 (2019-02-23 18:15) and automatically deactivate the group two hours later at 21:15
- The repeat interval is set to weekly and configured to repeat every 2 weeks on Monday, Tuesday and Wednesday
- The end of repetition is set to 30 April at 10:30 (2019-04-30 10:30)

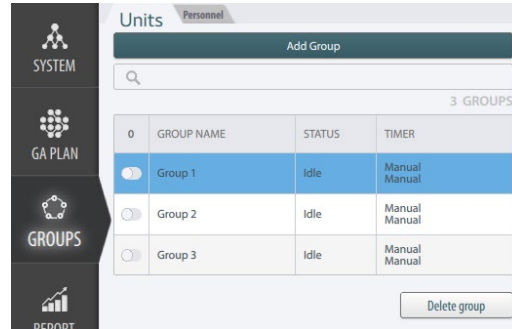
- After clicking OK, the above configuration is shown in blue text in the Group window, together with the NEXT ACTION (First Interval)

PROPERTIES	
ARM	No value
PERFORMANCE CLASS OPTICAL DETECTORS	No value
PERFORMANCE CLASS HEAT DETECTORS	No value
PERFORMANCE CLASS MULTISENSORS	No value
PERFORMANCE CLASS FLAME DETECTORS	No value
OPERATION CLASS MULTISENSORS	No value

## 6.10 Deleting a Group

- Select the group you want to delete (click the row for a selected group and the row will be highlighted)

Note that it is allowed to delete a group even if it is active.



- Click the Delete groups button

A popup window will appear: DELETE GROUP!

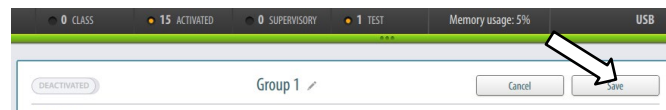
- To delete the selected group, click OK

## 6.11 Modifying a Group

- Select the group you want to modify (click the row for a selected group and the row will be highlighted)

Note that it is not allowed to modify an active group.

- Do all necessary changes
- When you have completed all changes, click the Save button to the right



## 6.12 Overlapping Groups with Different Properties

AutroMaster provides support for overlapping detector groups; overlapping groups are defined as two or more groups containing the same point (a detector or other points).

The different groups can have different properties in respect to class settings and disablements. If all these groups are active at the same time (the groups have been activated), certain rules apply regarding priority.

For detectors belonging to two or several active groups with different class settings, the group with the class setting that has the lowest sensitivity will have the highest priority and will apply to the detectors.

A disabled group will always have the “lowest sensitivity” and thus the highest priority.

Priority	Sensitivity	Performance Class		Operation Class
		MultiSensors and Optical Detectors	Heat Detectors	MultiSensors
Highest	Lowest	Industrial	C	Heat only
		Normal 2	B	Multi only
		Normal 1	A2S	Multi with heat
		Clean	A1R	
	Highest		A1	



## 6.13 Group Status

All groups that are created are listed on the left side of the Groups View. The list includes the name of the group and the status.

- Idle: not activated and all group members are default according to the group properties
- Passive: not activated and one or several group members are not default according to group properties
- Affected: similar to Passive, but group members are affected by other active groups with overlapping group properties (for example, both groups in question have overlapping Performance Classes, or group members are disabled for both groups)
- Empty: activated, but no group members
- Harmless: activated, but no group properties have been assigned to the group
- Partial: active, but one or several group members are not according to the group properties
- Active: activated and the group members are according to the group properties

## 6.14 Deleting Group Members

The Group Members list includes all group members for a selected Group. One or several group members can be deleted from a selected group as follows:

- Select the group (click the row for a selected group and the row will be highlighted)
- In the Group Members pane to the right, select the group members that are to be deleted (to select several, use the Ctrl key or Shift key to multiselect group members)
- To delete the selected group member(s) (highlighted), click the Remove from group button



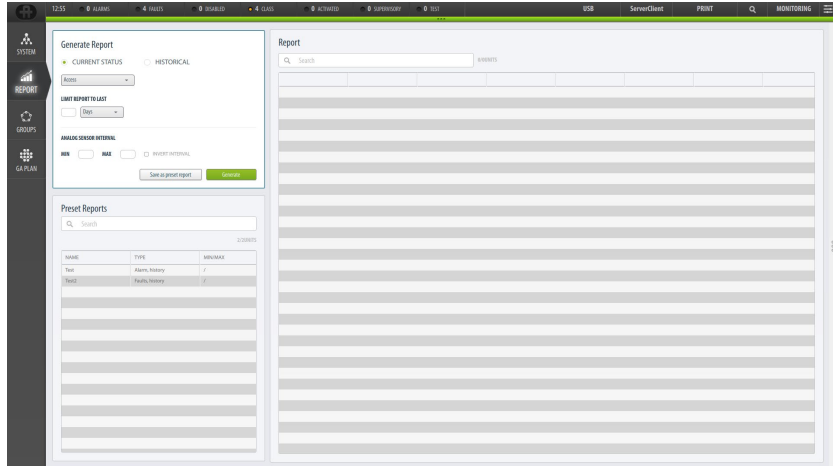
The screenshot shows a 'GROUP MEMBERS' interface. At the top, there is a search bar and a label '5 GROUP MEMBERS'. A button labeled 'Remove from group' is located at the top right, with a white arrow pointing to it. Below this is a table with the following data:

	NAME	TYPE	STATUS	SMV	PERFORMANCE CLASS	OPERATION CLASS	DETECTION ZONE	PANEL
1	*A0225 **Hybel Knapp***	OPT	Enabled	96	Normal 1		DZ Hybelknapp	BS-420
2	*A0225 **Hybel Knapp***	OPT	Enabled	96	Normal 1		DZ Hybelknapp	BS-420
3	1-003	MULTI					U016 TEKNISKROM V...	Brannsentr
4	1-004	MULTI					U014 LAGER (TØRK) K...	Brannsentr
5	1-006	MULTI					U004 KORRIDOR KJEL...	Brannsentr

# 7. Generating Reports

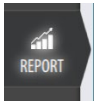
## 7.1 Introduction

The Report generator allows users to preview, print and save various reports.



## 7.2 Preparing to Generate a Report

### 7.2.1 Generate Report Window



- Click the REPORT button (left main view button)

The Generate Report window includes several different options that must be selected before saving or generating a report.

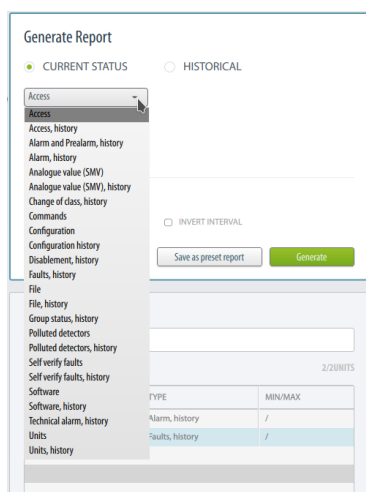
It is possible to save or generate a report of the current status for a defined period (for example, the last 3 weeks) or a historical report within a certain time interval.

From a dropdown box it is possible to choose between a number of various reports.

If a SMV or temperature report type has been selected, the user can set the analog values as an extra filter for the report.

## 7.2.2 Report of the Current Status

- In the Generate Report Window, select CURRENT STATUS.
- Select the report type in the drop down box

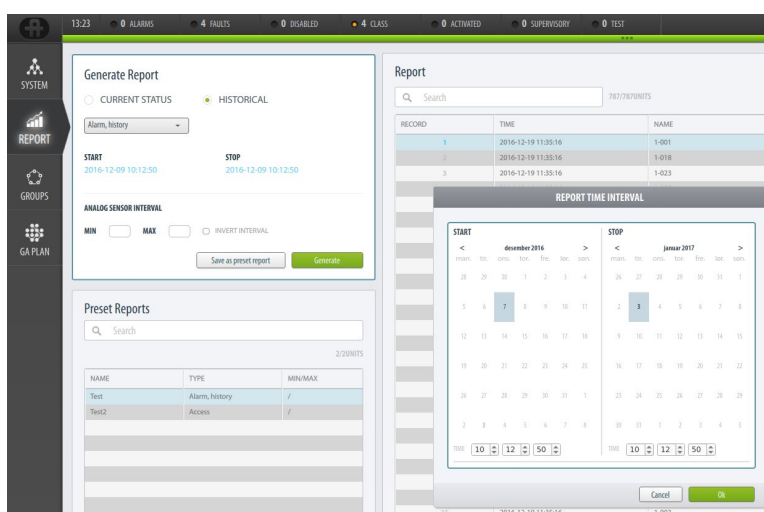


- Limit the report to a certain period, for example, the last 30 weeks.



## 7.2.3 Historical Report

- In the Generate Report Window, select HISTORICAL.
- Select the report type in the drop down box
- Click directly the date (in blue color) below START or STOP
- In the calendar that appears, select the start and stop (Report Time Interval)



### 7.2.4 Setting Analog Sensor Interval



If the a SMV or temperature report type has been selected, the user can set the analog values (0-256) as an extra filter for the report (ANALOG SENSOR INTERVAL), for example:

- Set analog value minimum 64 and maximum 96
- To invert the selected range (i.e. set analog values from 0-4 and 4->), check the “INVERT INTERVAL” box.

### 7.3 Saving a Report as a Preset Report

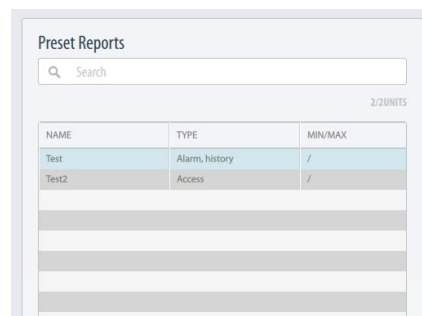
When all settings are made, a report can be saved as a preset report, providing easy access to a specific report.



- Click the Save as preset report button, then insert the report name.

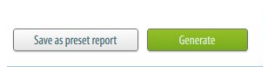


All preset reports that are saved will appear in the Preset Reports window below.



## 7.4 Generating a Report

- To generate the report, click the Generate button



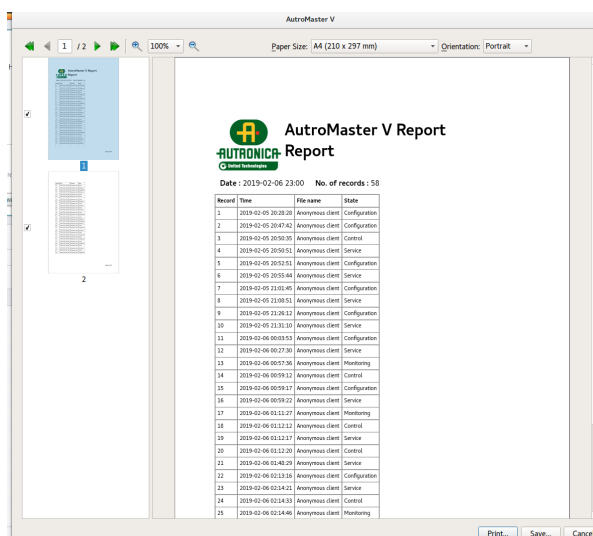
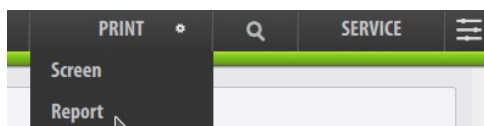
The report will appear in the window on the right hand side of the screen.

- To sort the report in ascending/descending order, click the columns heading of any heading

RECORD	TIME	NAME	EVENT TYPE	STATE	ACKNOWLEDGED
1	2016-12-19 11:35:16	1-001	Point alarm	Quiescent	
2	2016-12-19 11:35:16	1-018	Point alarm	Quiescent	
3	2016-12-19 11:35:16	1-023	Point alarm	Quiescent	
4	2016-12-19 11:35:16	1-030	Point alarm	Quiescent	
5	2016-12-19 11:35:16	1-008	Point alarm	Quiescent	
6	2016-12-19 11:35:16	2-020	Point alarm	Quiescent	
7	2016-12-19 11:35:16	2-024	Point alarm	Quiescent	
8	2016-12-19 11:35:16	2-035	Point alarm	Quiescent	
9	2016-12-19 11:35:16	2-036	Point alarm	Quiescent	
10	2016-12-19 11:35:16	2-037	Point alarm	Quiescent	
11	2016-12-19 11:35:16	2-063	Point alarm	Quiescent	
12	2016-12-19 11:35:16	2-067	Point alarm	Quiescent	
13	2016-12-19 11:35:16	2-071	Point alarm	Quiescent	
14	2016-12-19 11:35:16	3-012	Point alarm	Quiescent	
15	2016-12-19 11:35:16	3-031	Point alarm	Quiescent	
16	2016-12-19 11:35:16	4-006	Point alarm	Quiescent	

## 7.5 Printing Reports

In the REPORT view, the PRINT menu includes the submenu Report.



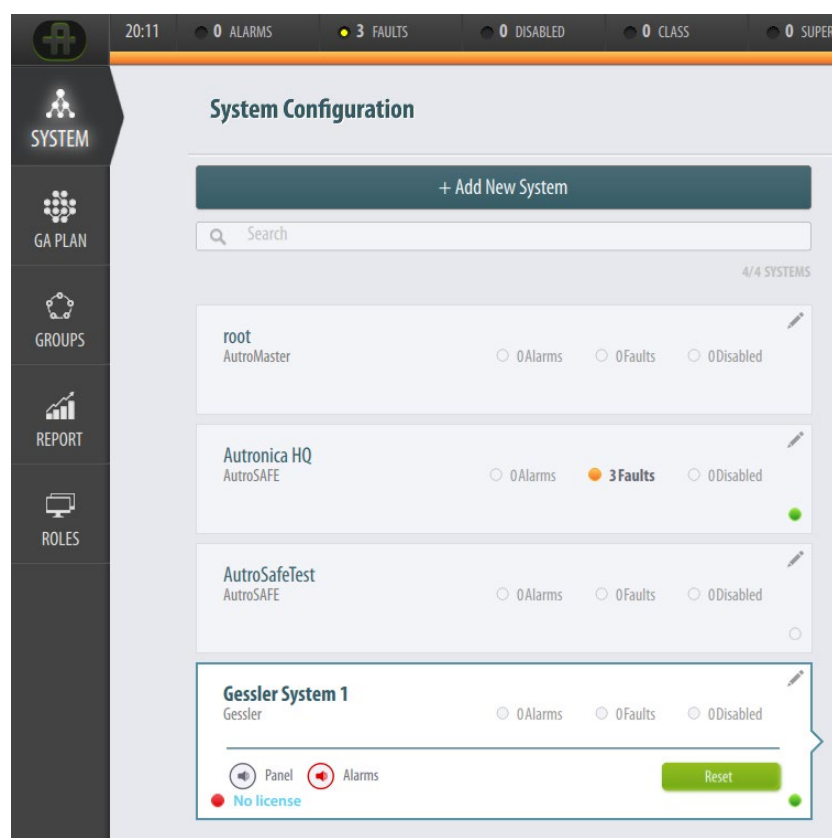
## 8. Operating a Gessler Emergency Light System from AutoMaster V

### 8.1 Description

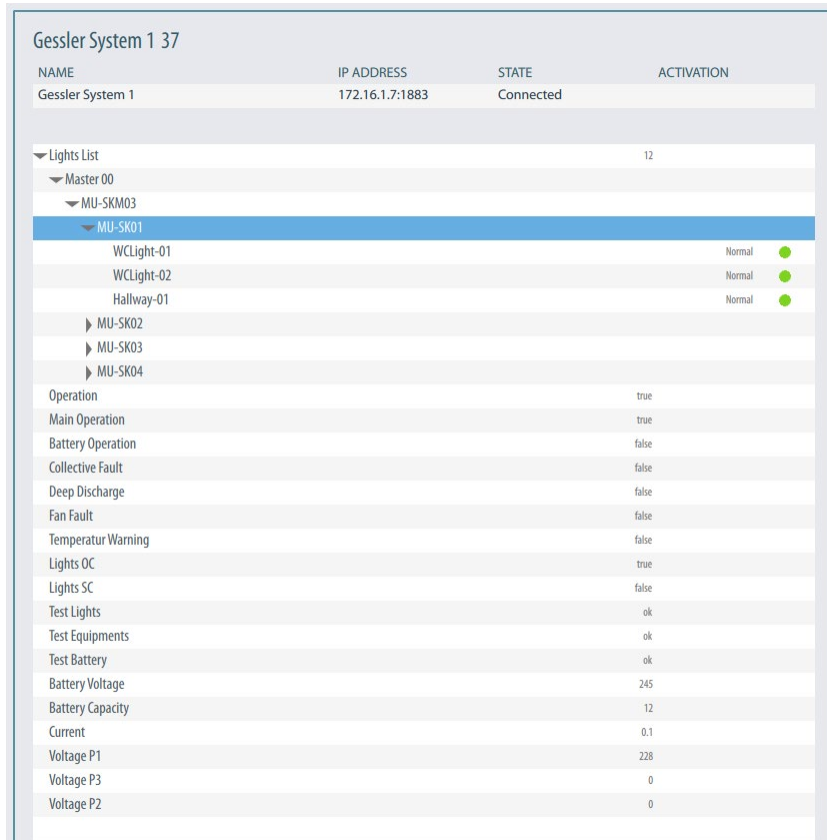
If a Gessler Merlin Emergency Light System is connected to an AutoMaster V system, the operator can view status information and perform different actions on the emergency lights system by operating from the AutoMaster V client.

### 8.2 Viewing Status Information

- Left-click to select the Gessler system (for example, Gessler System 1)



The status information for the selected Gessler system will appear in the status window in the middle of the screen. The first line shows the name of the system, the IP address and the current state (connected/disconnected).



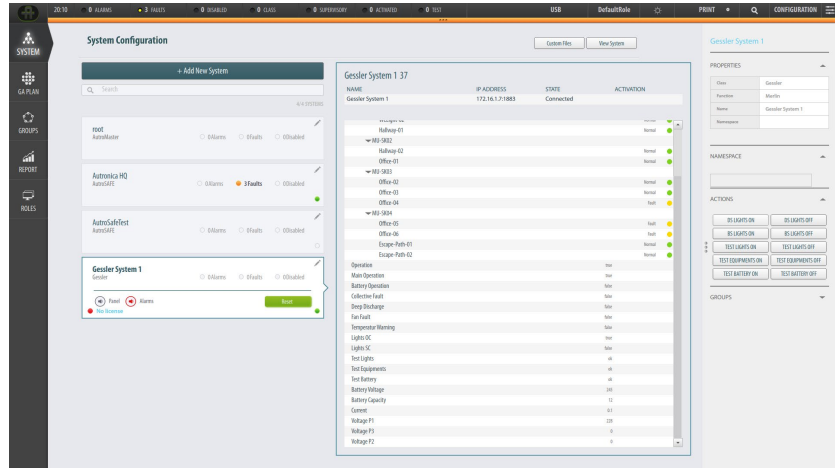
The status information includes the following:

Unit/Function	Status	Description
Lights List	Normal/Fault	Indicates the status of lights
Operation	True/False	Indicates the status of operation
Main Operation	True/False	Indicates the status of main operation
Battery Operation	True/False	Indicates the status of battery operation
Collective Fault	True/False	Indicates the status of failure
Deep Discharge	True/False	Indicates battery deep discharge
Fan Fault	True/False	Indicates fan failure
Temperature Warning	True/False	Indicates temperature warning
Lights OC	True/False	Indicates whether OC lights are ON or OFF (True/False)
Lights SC	True/False	Indicates whether SC lights are ON or OFF (True/False)
Test Lights	no/active/ok/error/abort	Provides the result of light test
Test Equipments	no/active/ok/error/abort	Provides the result of equipment test
Test Battery	no/active/ok/error/abort	Provides the result of battery test
Battery Voltage	Current measured value	Indicates the battery voltage
Battery Capacity	Current measured value	Indicates the battery capacity
Current	Current measured value	Indicates the current
Voltage P1	Current measured value	Indicates the voltage if phase 1
Voltage P2	Current measured value	Indicates the voltage if phase 2
Voltage P3	Current measured value	Indicates the voltage if phase 3

### 8.3 Actions

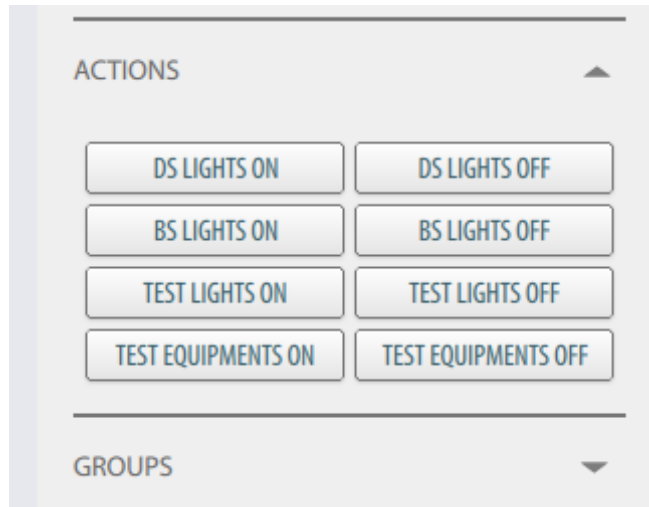
Different actions are available for each Gessler system (for example, you can turn ON/OFF lights).

- Left-click to select the Gessler system in question (for example, Gessler System 1)



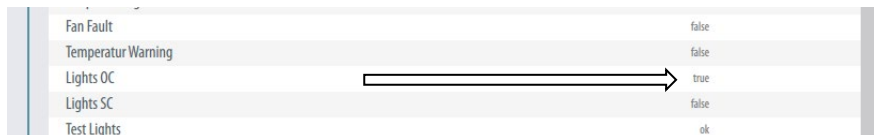
The rightmost pane will show the actions that are available for the selected Gessler system.

You can turn ON or OFF the following:



The unit status (ON/OFF) is indicated in the System tree view. For example, if Lights OC shows “false” in the status window, it will change to “true” when you select DS LIGHTS ON (as a result of the system action).

Note that it may take a short period before the changes take effect and the current status is indicated in the status window.







Autronica Fire and Security AS

Bromstadveien 59, 7047 Trondheim, Norway | Phone: +47 90 90 55 00 |

Email: [info.autronica@carrier.com](mailto:info.autronica@carrier.com) | [www.autronicafire.com](http://www.autronicafire.com)