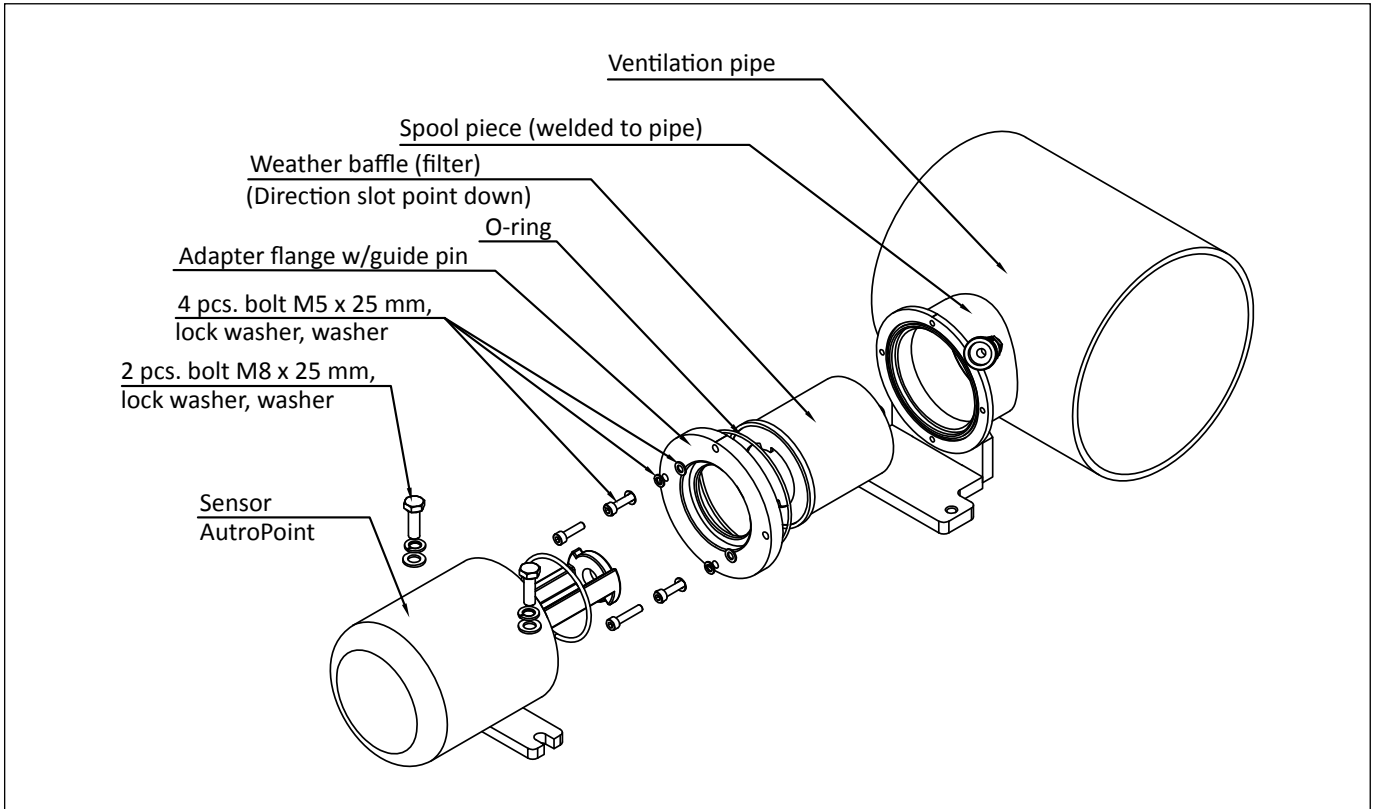


# HP PIPE MOUNTING FLANGE

Gas detection

Product Datasheet



## Features

- Compatible with AutoPoint sensor range
- For use in single and double wall pipe constructions
- Max pressure 10 bar
- Test gas functionality
- Easy installation
- Easy maintenance

## Product overview

The high pressure pipe mounting flange is designed for use in single as well as double wall direct pipe mounting constructions. It is compatible with the entire AutoPoint sensor range (HC200, HC300 and Maritime Gas detector).

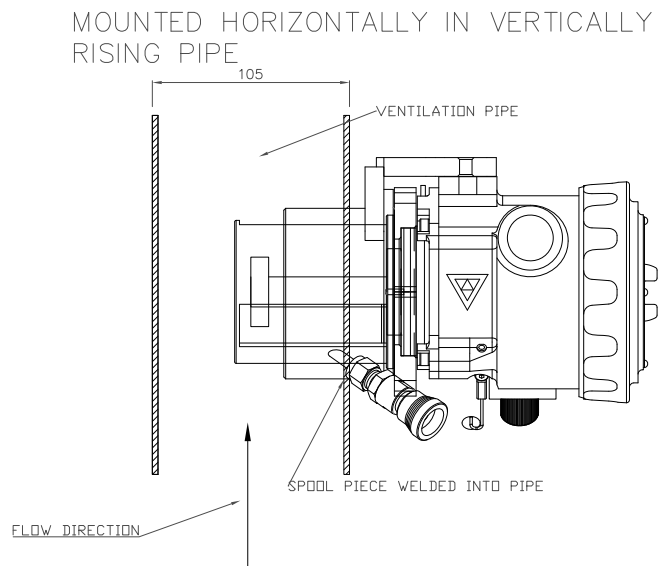
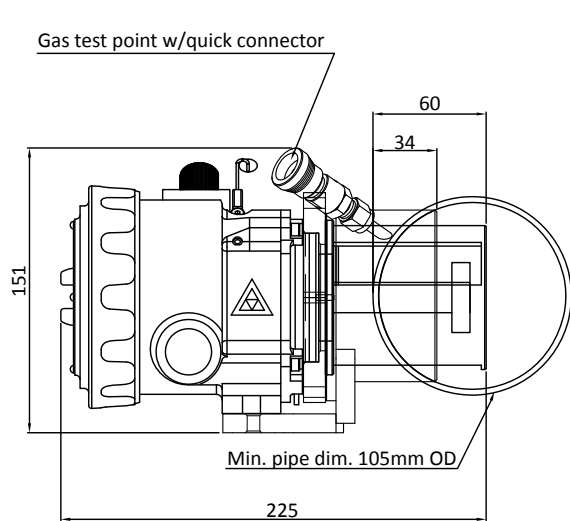
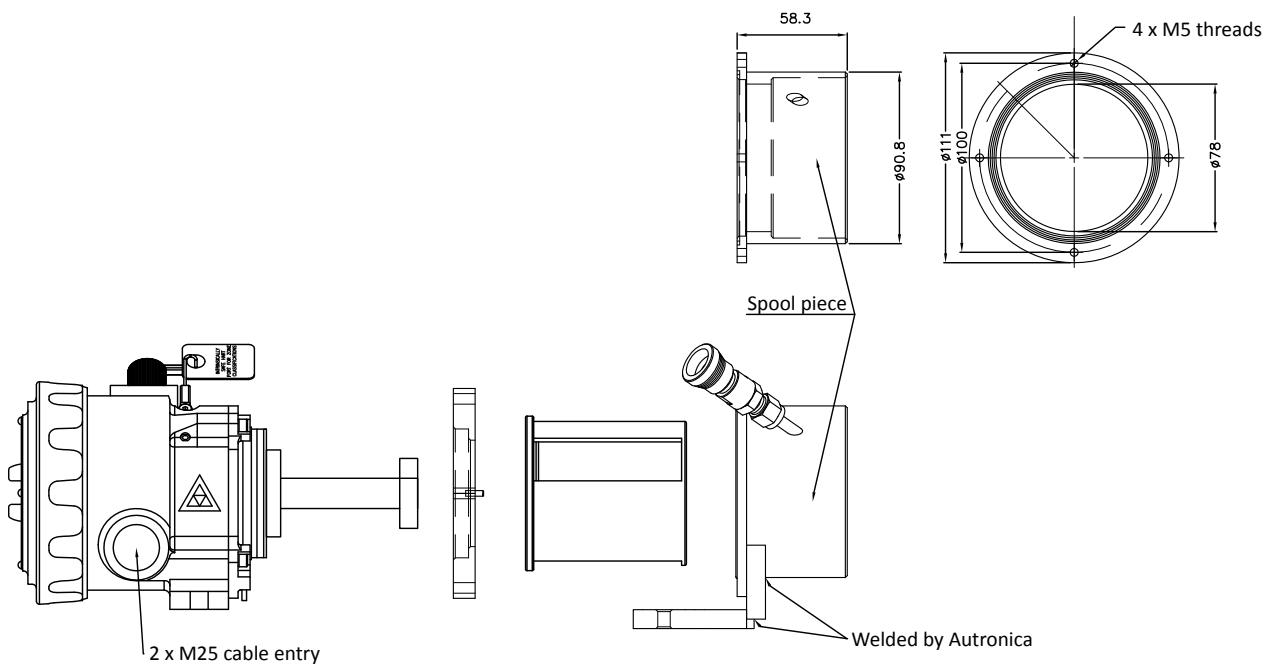
The flange is easily installed, and is equipped with a special quick connector test gas inlet enabling a sensor function test in normal operation without demounting the sensor. No special tools are required to disassemble the sensor from the flange, allowing an easy exchange of the weather baffle in case of filter pollution.

The flange is constructed in stainless steel, tolerating the challenging maritime environmental conditions and a pressure difference of up to 10 bars.

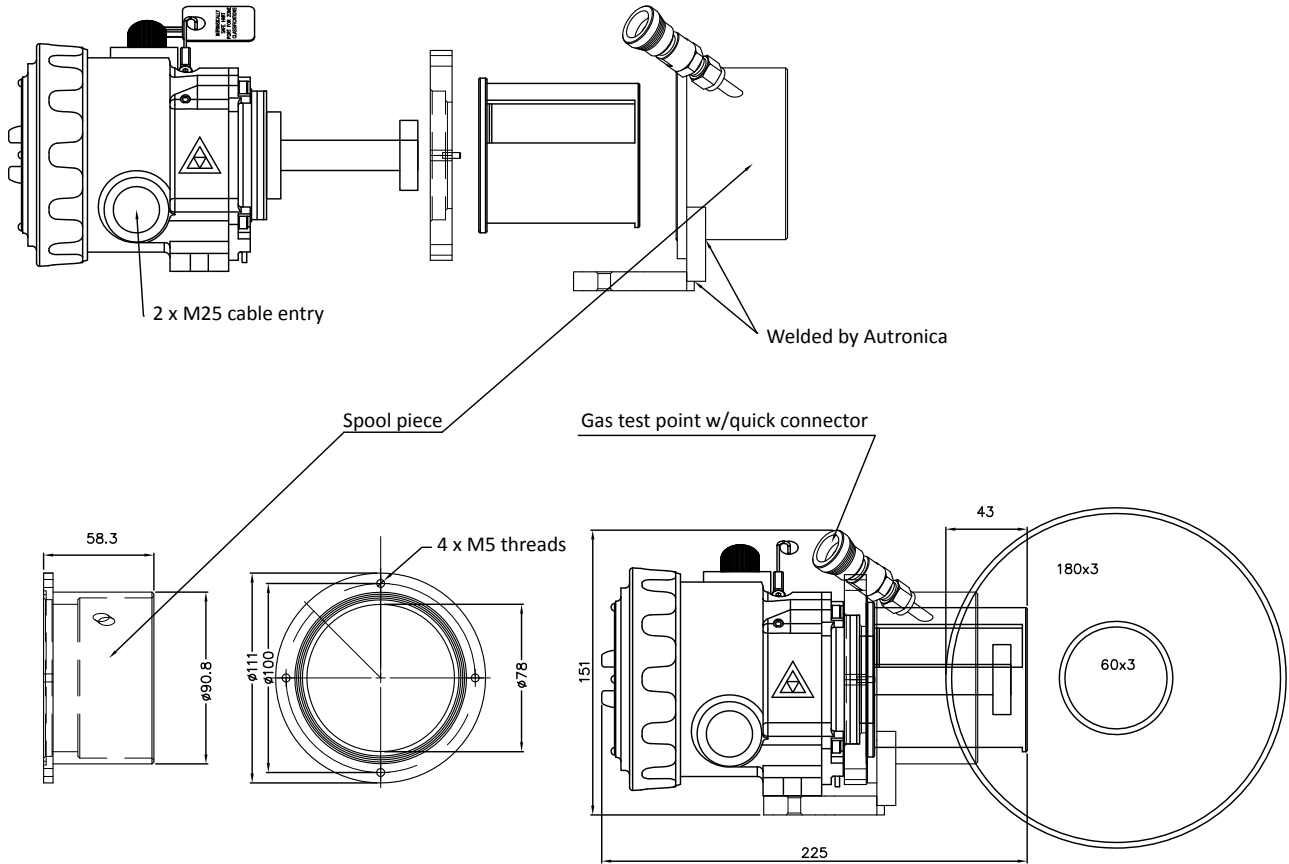
Part number	Description
116-26664	HP Pipe Mounting Flange

Technical Specification	
Dimensions WxHxD (mm)	132 x 225 x 151 (incl. sensor and filter)
Housing material	AISI SS316
Max. pressure	10 BAR
Minimum pipe dimensions: Single wall	105 mm OD
Double wall	Distance between inner and outer pipe tube min. 60 mm at sensor installation point

### Installation with single wall pipe



### Installation with double wall pipe



MOUNTED HORIZONTALLY IN  
VERTICALLY RISING PIPE

